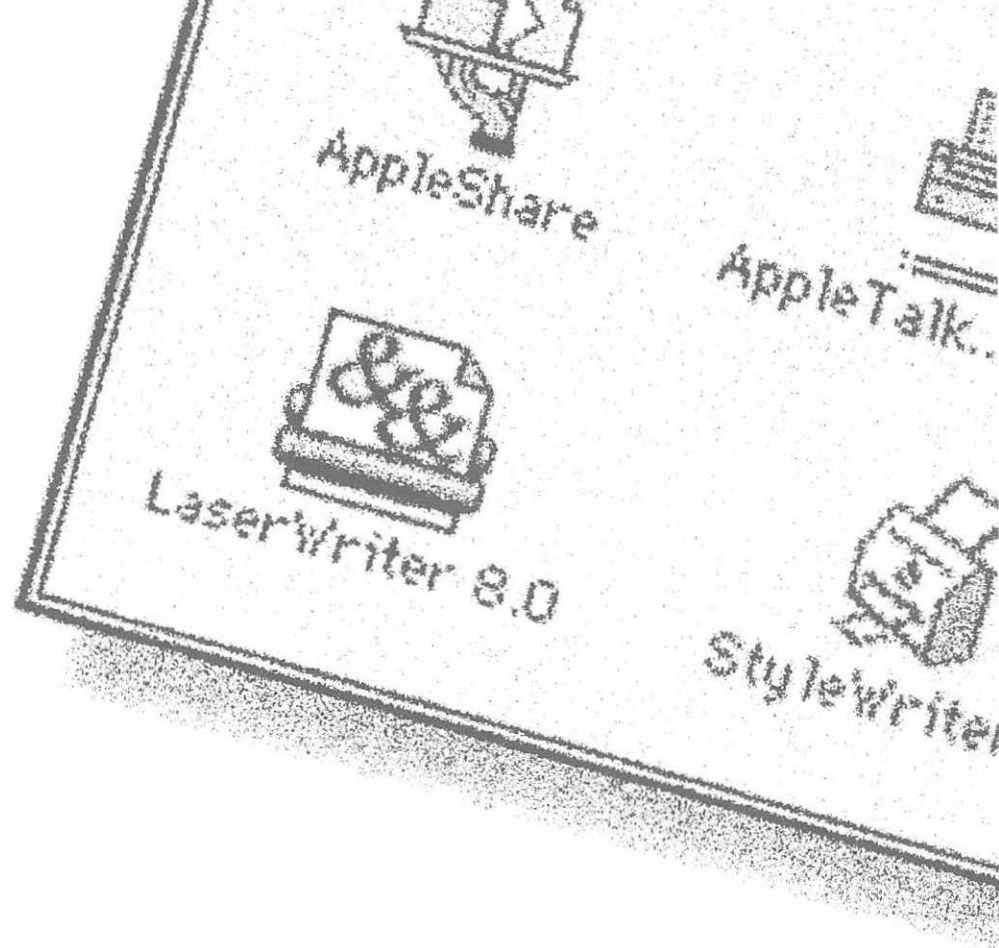


LaserWriter 8.0 Driver

Update Guide



LaserWriter 8.0 Driver

Update Guide

Apple Computer, Inc.

This manual and the software described in it are copyrighted, with all rights reserved. Under the copyright laws, this manual or the software may not be copied, in whole or part, without written consent of Apple, except in the normal use of the software or to make a backup copy of the software. The same proprietary and copyright notices must be affixed to any permitted copies as were affixed to the original. This exception does not allow copies to be made for others, whether or not sold, but all of the material purchased (with all backup copies) may be sold, given, or loaned to another person. Under the law, copying includes translating into another language or format.

You may use the software on any computer owned by you, but extra copies cannot be made for this purpose.

The Apple logo is a trademark of Apple Computer, Inc., registered in the U.S. and other countries. Use of the "keyboard" Apple logo (Option-Shift-K) for commercial purposes without the prior written consent of Apple may constitute trademark infringement and unfair competition in violation of federal and state laws.

© Apple Computer, Inc., 1993
20525 Mariani Avenue
Cupertino, CA 95014-6299
(408) 996-1010

Apple, the Apple logo, AppleLink, LaserWriter, and Macintosh are trademarks of Apple Computer, Inc., registered in the U.S. and other countries.

Chicago, Finder, FinePrint, Geneva, Monaco, New York, PhotoGrade, QuickDraw, System 7, TrueType and Zeal are trademarks of Apple Computer, Inc.

Adobe, Adobe Illustrator, and PostScript are trademarks of Adobe Systems, Incorporated, registered in the United States. Adobe Photoshop is a trademark of Adobe Systems Incorporated.

Exposure is a registered trademark of Preferred Publishers, Inc.

Helvetica and Times are trademarks of Linotype Co.

IBM is a registered trademark of International Business Machines Corporation.

QMS is a registered trademark and ColorScript is a trademark of QMS, Inc.

QuarkXPress is a registered trademark of Quark, Inc.

SuperPaint is produced by Silicon Beach Software.

Simultaneously published in the United States and Canada.

Mention of third-party products is for informational purposes only and constitutes neither an endorsement nor a recommendation. Apple assumes no responsibility with regard to the performance or use of these products.

Contents

Installing and Using the LaserWriter 8.0 Driver 1


- When to refer to this update guide 1
- Before you install LaserWriter 8.0 2
 - Protecting your disks 2
- Installing the printer software on your Macintosh 3
 - Installing all the printer software 4
 - Custom installing the printer software 6
- Selecting and setting up the printer 9
 - Setting up the printer driver automatically 10
 - Setting up the printer driver manually 11
 - Configuring the driver to use custom installed printer options 14
 - Viewing printer information 16
- Printing 17
 - Selecting Page Setup options 17

Printing documents 19

- Printing a document with an automatic cover page 20
- Printing color or grayscale documents 21
- Printing a report of PostScript errors 22
- Printing a document with FinePrint or Photograde 23
- Printing to a file 24
- Turning automatic tray switching on or off 27
- Printing a document at 300 or 600 dpi 28

LaserWriter 8.0 PPD Files 31

Key Combinations for Zeal Font 33



Installing and Using the LaserWriter 8.0 Driver

This update describes how to install the LaserWriter 8.0 printer driver for the Macintosh and use it with your printer.

The LaserWriter 8.0 driver offers

- Improved PostScript® printing
- Advanced paper-handling capabilities
- Customizable printer resources that support your printer's specific features and options
- Full support of PostScript Level 1 and Level 2
- Enhanced Printing and Page Setup options

For information about using your printer with an IBM PC or IBM PC-compatible computer, refer to the manual that came with your printer.

When to refer to this update guide

Refer to this guide for information about installing and setting up the LaserWriter 8.0 driver. The guide also describes how to print and how to use the options in the Page Setup and Print dialog boxes.

Refer to the manual that came with your printer for all other information about unpacking and connecting the printer, loading paper and toner cartridges, maintaining the printer, and troubleshooting printing problems.

It's a good idea to keep this update documentation with your printer manual.

Before you install LaserWriter 8.0

△ **Important:** Before carrying out the installation instructions in this update guide, first install the LaserWriter software, following the instructions in your printer manual. The manual provides complete information about backing up disks, checking the version of your system, and installing and using fonts and printing options specific to your printer model. △

After installing your LaserWriter software, turn to this update to install the LaserWriter 8.0 driver. This second installation process replaces portions of the LaserWriter software with the latest versions.

Although you need not install the LaserWriter 8.0 driver to print using your LaserWriter, it's recommended that you do so to ensure optimum printer performance and use of enhanced print options.

Before you install the LaserWriter 8.0 software, protect your original disks by locking them and making copies of them.

Protecting your disks

You can protect the floppy disks that came with your LaserWriter by locking them (so you don't accidentally change anything on them) and by making backup copies of them (so if one set is damaged, you still have a copy).

1. **Make sure the disks are locked.**

You lock a disk by sliding its write-protection tab up. The disk is locked when you can see through the hole. For more details, see the documentation that came with your Macintosh.

2. **Make a backup copy of each disk.**

You can find instructions for copying disks in the documentation that came with your Macintosh. You'll need a blank 800K floppy disk for each disk you want to back up.

Installing the printer software on your Macintosh

Installing the LaserWriter 8.0 printer driver is a two-step process. You first install the driver software and then set up the driver to work with your printer.

The software you need to install is on the *LaserWriter 8.0 Install* disk. This disk contains

- The LaserWriter 8.0 driver
- PostScript Printer Description (PPD) files that configure the driver to print using your particular printer model
- PrintMonitor utility
- Backgrounder utility
- TeachText and Read Me Text file describing the latest changes and technical information about the update software
- Installer and installer script

Follow the steps later in this section to install the driver software on your Macintosh.

You can install all the printer software at once. PPD files for all Apple LaserWriter printers will be placed on your hard disk. You can then use the LaserWriter 8.0 driver to print using any Apple LaserWriter printer with PostScript (except the LaserWriter Select 310) available to your Macintosh. You can also use the driver to print using laser printers from other manufacturers that offer PPD files for their printers. To install all the printer software, see “Installing All the Printer Software” next.

△ **Important:** Additional PPD files for LaserWriter printers that have specific PostScript versions and memory capacities are also available on the *LaserWriter 8.0 Install* disk. You can install a PPD file for a printer that has a specific PostScript version and memory capacity using the custom install procedure in “Custom Installing the Printer Software” later in this manual. To see a list of the PPD files available on the *LaserWriter 8.0 Install* disk, see Appendix A, “LaserWriter 8.0 PPD Files.” △

You can also custom install the printer software and only those PPD files for the specific printers that you use. To custom install the printer software, see “Custom Installing the Printer Software” later in this guide.

△ **Important:** If your Macintosh has System 6, installing the LaserWriter 8.0 driver places new versions of the PrintMonitor and Backgrounder utilities in your System Folder. The new PrintMonitor and Backgrounder utilities may not work with previous versions of the LaserWriter driver on Macintosh computers that have System 6. If you intend to use an older version of the LaserWriter driver again, make copies of the older System 6 PrintMonitor and Backgrounder utilities and keep them for use with the older LaserWriter driver. △

Installing all the printer software

1. Go to the Finder desktop.

If your machine is off, turn it on. If it's already on, quit any programs that are running.

△ **Important:** Before you install the printer software, turn off any automatic virus detection programs you have on your Macintosh computer. If you don't, problems may occur during installation. After installation is complete, you can turn the virus detection programs back on. △

2. Insert the *LaserWriter 8.0 Install* disk in a disk drive.

The disk's icon appears on the desktop, as shown in the next step.

3. Double-click the disk icon to open the disk.



4. Double-click the Installer icon to open the Installer.



When you open the Installer, a Welcome screen displays information about the files that will be installed.

5. Click OK to continue.

The Easy Install dialog box appears.

6. Click the Install button.

The Installer takes a few moments to calculate what needs to be done and then begins to copy files.

7. Follow the instructions on the screen.

You see a message when the installation has been successfully completed. If you turned off any automatic virus detection programs on your Macintosh, turn them back on now.

Congratulations! You've installed all the software necessary to print. Next you must set up the driver to work with your printer. Skip ahead to "Selecting and Setting Up the Printer" later in this guide.

Custom installing the printer software

To use a LaserWriter printer with the LaserWriter 8.0 driver, you must install a PostScript Printer Description (PPD) file for your printer model. To install the appropriate PPD file, you select the PPD file that matches your printer model (LaserWriter, Personal LaserWriter NTR, LaserWriter Pro, or other).

For some printers, additional PPD files are provided that support models that have a specific version of PostScript and, in some cases, a specific amount of memory (RAM). If such PPD files are available, it's recommended that you install and use the PPD file created for your printer's specific model, PostScript version, and memory capacity.

The new LaserWriter 8.0 driver software can determine the printer's PostScript version and memory for you. If you're uncertain which PPD file to install, install the new LaserWriter 8.0 driver and all the PPD files for your printer model. You can then use the new driver to check your printer's characteristics and select the appropriate PPD file. You can discard unneeded PPD files later, if necessary.

For information about determining a printer's PostScript version and memory capacity after installing the driver software, see "Viewing Printer Information" later in this guide.

1. Go to the Finder desktop.

If your machine is off, turn it on. If it's already on, quit any programs that are running.

△ **Important:** Before you install the printer software, turn off any automatic virus detection programs you have on your Macintosh computer. If you don't, problems may occur during installation. After installation is complete, you can turn the virus detection programs back on. △

2. Insert the *LaserWriter 8.0 Install* disk in a disk drive.

The disk's icon appears on the desktop, as shown in the next step.

3. Double-click the disk icon to open the disk.



4. Double-click the Installer icon to open the Installer.



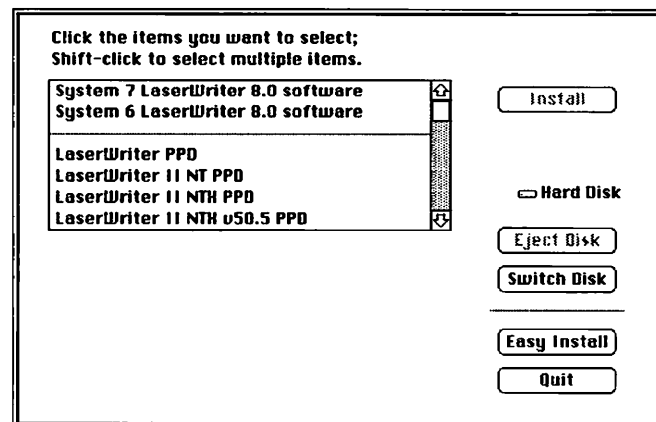
When you open the Installer, a Welcome screen displays information about the files that will be installed.

5. Click OK to continue.

The Easy Install dialog box appears.

6. Click the Customize button.

The Custom Install dialog box appears. It lists the LaserWriter 8.0 printer driver software for System 6 and System 7 and the available PPD files for each model of Apple LaserWriter printer.



The PPD files are listed by model name. Some files show a PostScript version after the model name (for example, LaserWriter Plus v42.2). Some PPD files also list the amount of memory the printer should have to use that PPD file.

For example, the PPD file “LaserWriter IIg v2010.113 8MB” is the correct PPD file for a LaserWriter IIg with PostScript version v2010.113 and 8 megabytes of memory.

continues ►

7. Select the files you want to install.

Click to select the driver software for System 6 or System 7, then Shift-click the name of the PPD file appropriate for your printer. To select and install several PPD files, Shift-click the names of the files you want to install.

If you have a choice of PPD files, you should select the one that most specifically matches your printer's model, PostScript version, and memory size.

If you're uncertain which PPD file to install, select all the PPD files for your model printer. You can then determine which is the correct one after installing the driver software.

8. Click the Install button.

The Installer takes a few moments to calculate what needs to be done and then begins to copy files.

9. Follow the instructions on the screen.

You see a message when the installation has been successfully completed. If you turned off any automatic virus detection programs on your Macintosh, turn them back on now.

Congratulations! You've installed all the software necessary to print. Now you must set up the driver to work with your printer. See "Selecting and Setting up the Printer," next.

Selecting and setting up the printer

If the LaserWriter is connected to a network, you need to select the printer from your computer when you want to print for the first time or after using another printer.

On a Macintosh computer, you select a printer on an AppleTalk network by using a program called the Chooser.

You also use the Chooser to set up the printer driver to work with your LaserWriter the first time you select the printer. After setting up the printer driver, you don't need to set it up again unless you change or install additional printer options.

When you installed the LaserWriter 8.0 software, a Printer Description folder was placed in your System Folder. (If your Macintosh has System 7, this folder appears in the Extensions folder.) The Printer Description folder holds PostScript Printer Description (PPD) files that provide the driver with information about the features of specific LaserWriter models. To set up the driver for your printer model, you must select the PPD file for your printer.

❖ *By the way:* You can use the LaserWriter 8.0 driver to print with printers from other manufacturers that provide PPD files for their printers. See your printer documentation or contact the printer manufacturer about obtaining a PPD file. Place the PPD file in the Printer Description folder in your System Folder. You can then select and set up the PPD file using the procedures in this update. ❖

The Chooser can automatically select the appropriate PPD file for your printer, or you can select one manually.

When selecting a PPD file automatically, the Chooser selects the PPD file for a standard LaserWriter printer of your model. To automatically set up the driver, follow the instructions in "Setting Up the Printer Driver Automatically," next.

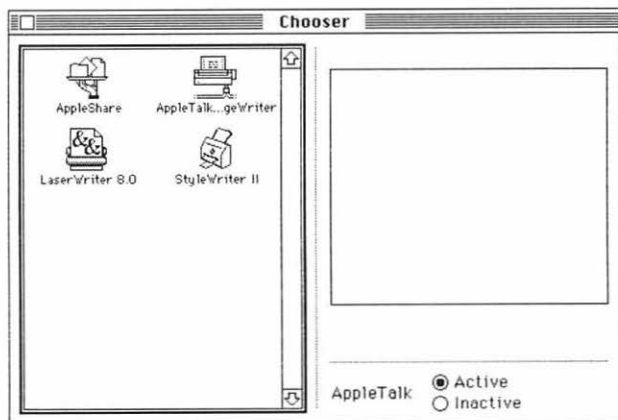
If you have installed additional memory, or if your printer uses an updated PostScript version, you should manually select a PPD file created for your printer's PostScript version and memory capacity. Follow the instructions in "Setting up the Printer Driver Manually," later in this update.

After selecting a PPD file, you can further configure the file to allow the printer to use special options such as optional paper trays or hard disks. To customize a PPD file to use your printer's special options, follow the instructions in "Configuring the Driver to Use Custom Installed Printer Options" later in this update.

Setting up the printer driver automatically

1. Choose the Chooser from the Apple menu.

The Chooser dialog box appears.



2. Click the LaserWriter 8.0 icon (in the left half of the dialog box).

If you don't see the LaserWriter 8.0 icon, scroll the window.

The name of your LaserWriter printer appears in the right half of the dialog box (along with the names of any other available LaserWriter printers).

3. Click the LaserWriter printer name.

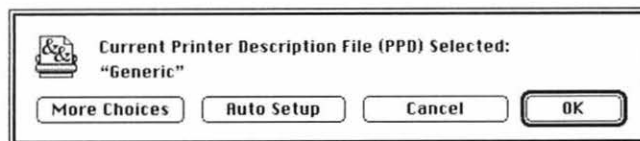
You've now selected the LaserWriter printer for printing. The Setup button appears in the dialog box.

If this is the first time you've selected the printer, or if you have just installed new options, you need to set up the driver. Continue with step 4.

When the printer has been set up, a small printer icon appears beside the printer name. If you have already set up the driver for this printer, skip to step 7.

4. Click Setup.

The Setup dialog box appears.



5. In the Setup dialog box, click Auto Setup.

The Chooser automatically checks your printer's model and selects a PPD file.

If the driver can't find the appropriate PPD file, a message appears asking if you want to select a generic LaserWriter PPD file that provides the basic printing features of a LaserWriter, or if you want to select an available PPD file from a list. To use the generic PPD file, click Generic. To select another PPD file, click Select PPD, select the PPD file, and click Select.

A message appears saying that setup is completed.

6. Click OK.

7. Close the Chooser by clicking the close box (in the top left corner).

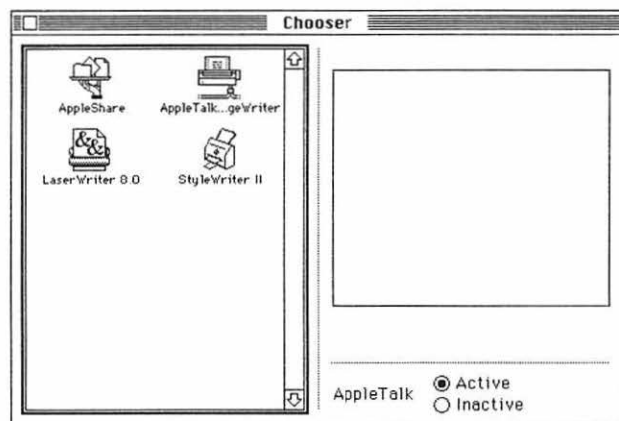
Setting up the printer driver manually

You can manually select the PPD file that the driver should use for your printer. For example, you might select a PPD file that you have customized to work with a specific printer, or select a PPD file appropriate for your printer's PostScript version. If a PPD file is not available for your particular printer, you can also select a generic PPD file that provides basic print functions.

To select the proper PPD file, look for a PPD file that matches your printer model. If more than one PPD file is available for your model, select the PPD file marked for your printer's PostScript version. You should select the PPD file that matches both the printer's PostScript version and its memory capacity, if such a file is available. You can check your printer's PostScript version and memory capacity by clicking the Printer Info button in the Chooser's Setup dialog box. For more information about checking your printer's characteristics, see "Viewing Printer Information" later in this update.

1. Choose the Chooser from the Apple menu.

The Chooser dialog box appears.



2. Click the LaserWriter 8.0 icon (in the left half of the dialog box).

If you don't see the LaserWriter 8.0 icon, scroll the window.

The name of your LaserWriter printer appears in the right half of the dialog box (along with the names of any other available LaserWriter printers).

3. Click the LaserWriter printer name.

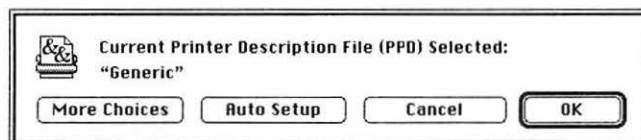
You've now selected the LaserWriter printer for printing.

If this is the first time you've selected the printer, or if you have just installed new options, you need to set up the driver. Continue with step 4.

When the printer has been set up, a small printer icon appears beside the printer name. If you have already set up the driver for this printer, skip to step 8.

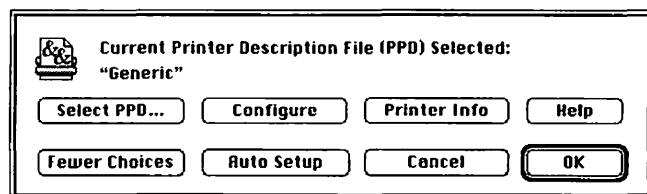
4. Click Setup.

The Setup dialog box appears.



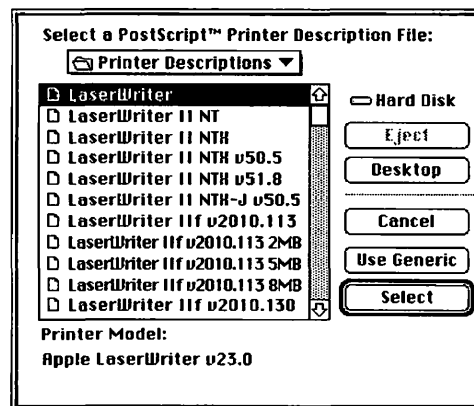
5. If the **More Choices** button appears in the Setup dialog box, click it to display more buttons for additional options. If **More Choice** doesn't appear, skip to the next step.

Additional buttons appear in the dialog box. (The **More Choices** button becomes the **Fewer Choices** button, which you can click to dismiss the additional buttons when you no longer need them.)



6. Click **Select PPD**.

A dialog box appears that lists the available PPD files in the Printer Description folder.



The PPD files are listed by model name. Some files show a PostScript version after the model name (for example, **LaserWriter II NTX v50.5**).

Some PPD files also list the amount of memory the printer should have to use that PPD file. For example, the PPD file "**LaserWriter IIf v2010.113 2MB**" is the correct PPD file for a LaserWriter IIf with PostScript version v2010.113 and 2 megabytes of memory.

continues ►

7. Click the name of the PPD file you want and then click Select.

Select the PPD file that best matches your printer's characteristics.

If you're uncertain of your printer's PostScript version or memory size, you can cancel this procedure and check your printer's characteristics using the Printer Info button in the Setup dialog box. See "Viewing Printer Information" later in this update.

If you don't find a PPD file for your printer model, click the Use Generic button to use a generic PPD file that provides the basic print functions of a LaserWriter.

8. Click OK to confirm your selection of the PPD file and return to the Chooser.

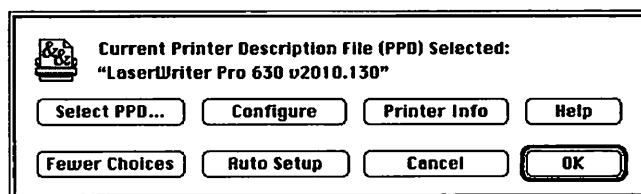
Configuring the driver to use custom installed printer options

If you have installed special options on your printer, you can configure the driver to use these options. For example, if you have added an optional envelope feeder or paper tray, you configure the driver to indicate the addition of these options.

To configure the driver, first open the Chooser's Setup dialog box (by following steps 1 through 4 in the setup procedure in "Setting up the Printer Driver Automatically" earlier in this update).

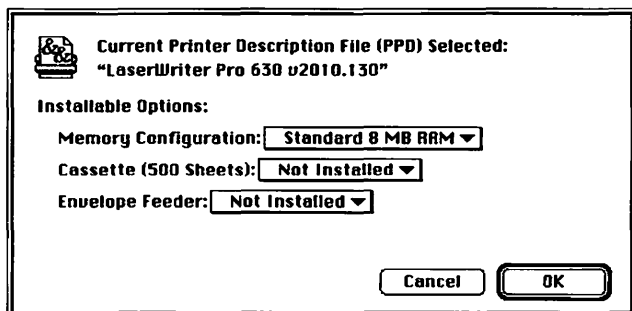
1. If the Configure button doesn't appear in the Setup dialog box, click More Choices.

Additional buttons appear in the dialog box. (The More Choices button becomes the Fewer Choices button, which you can click to dismiss the additional buttons when you no longer need them.)



2. Click Configure.

A dialog box appears that lists the installable options for the selected printer model.



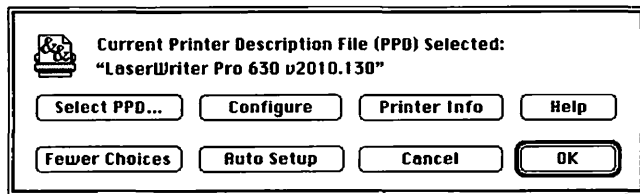
3. Choose the options your printer has installed and then click OK.
4. Click OK to confirm your changes to the PPD file and return to the Chooser.

Viewing printer information

You can view information about the selected printer and its current setup configuration. To check the information for the selected printer, first open the Chooser's Setup dialog box (by following steps 1 through 4 in the setup procedure in "Setting up the Printer Driver Automatically" earlier in this update).

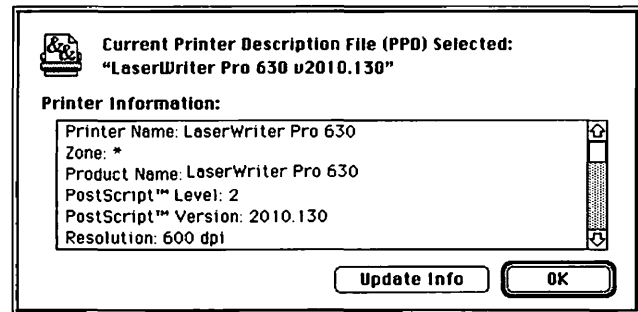
1. **If necessary, click More Choices in the Setup dialog box.**

Additional buttons appear in the dialog box.



2. **Click Printer Info.**

A dialog box appears that lists the current information for the selected printer.



Use the scroll bar to scroll through the information you want to review.

If you have made changes, click Update Info to have the driver update the displayed information with the latest changes.

3. **When you have finished viewing the printer information, click OK to close the dialog box.**
4. **Click OK to return to the Chooser.**

Printing

On the Macintosh, printing functions are controlled through the Page Setup and Print dialog boxes, which are accessed through the File menu.

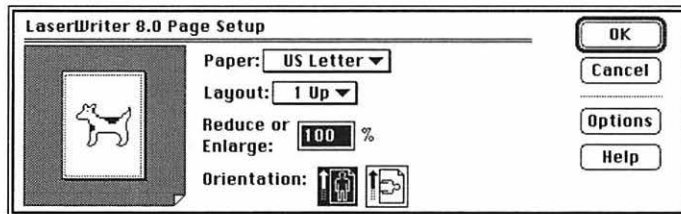
Most Macintosh application programs use a version of the standard Page Setup and Print dialog boxes, although the exact options presented vary among programs. (See the manuals that came with your program for details about specific options.)

Selecting Page Setup options

The Macintosh Page Setup dialog box allows you to specify certain aspects of your document, such as its page size, format, and orientation, as well as the settings for several print effects.

1. Choose Page Setup from the File menu.

The Page Setup dialog box appears.



2. Select the Page Setup options you want.

- In the Paper pop-up menu, choose a paper size.
- In the Layout pop-up menu, choose a page layout. You can set up the printer to print one, two, or four pages per sheet. (The printer then prints your pages at a reduced or enlarged size to fit them in the chosen layout on a sheet.)
- In the Reduce or Enlarge option, enter the percentage of enlargement or reduction that you want the printed document to have. (Enter a number greater than 100 to enlarge, less than 100 to reduce.)
- In the Orientation option, select portrait (tall) or landscape (wide) page orientation.

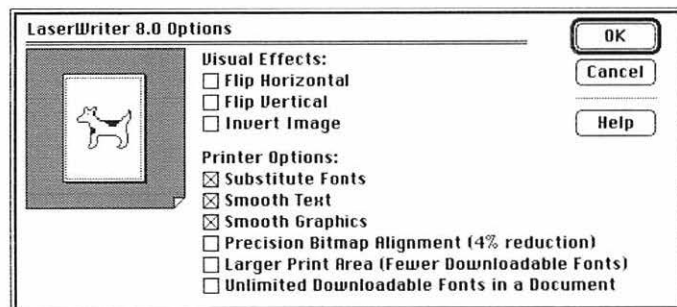
When you choose a Paper, Layout, or Orientation option, a representation of your selection appears in the page image on the left of the dialog box.

To see a listing of the currently selected page dimensions, click the page image. Click the page image again to close the dimensions listing and return to the page image.

continues ►

3. To print using special effect options, click Options. (If you don't want to choose print options, skip to step 5.)

The Options dialog box appears.



- Select Flip Horizontal to flip the page image horizontally.
- Select Flip Vertical to flip the page image vertically.
- Select Invert Image to print a negative image.
- Select Substitute Fonts to allow the printer to use a different font if the Macintosh screen font Geneva, Monaco, or New York is not available on your computer. When this option is selected, the printer substitutes Helvetica® for Geneva, Courier for Monaco, and Times® for New York.

- Select Smooth Text to smooth edges of letters when your printer does not contain the font used in the document.
- Select Smooth Graphics to smooth ragged edges of lines in bitmapped graphics.
- Select Precision Bitmap Alignment to make printed bitmapped graphics more precisely match the screen image.
- Select Larger Print Area to print on more of your total page area, if your application allows.
- Select Unlimited Downloadable Fonts in a Document to print the document using as many downloadable fonts as your printer's memory can hold. The document may be printed more slowly.

4. Click OK to close the Options dialog box.

5. Click OK to close the Page Setup dialog box.

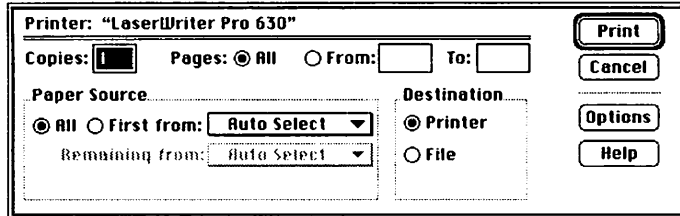
Printing documents

When you are printing from a Macintosh computer, most application programs display the Print dialog box, which allows you to specify print options such as the number of copies you want printed, whether to print all or part of a document, and which paper tray or cassette will be the paper source.

Some application programs also add options to the Print dialog box. For information about such options, refer to the documentation that came with the program.

1. Choose Print from the File menu.

The Print dialog box appears.



2. Select the options you want.

- In the Copies option, enter the number of copies you want.
- In the Pages options, select All to print the entire document, or select the From and To options and specify a range of pages.
- In the Paper Source options, select All and then select the paper cassette, multipurpose tray, or other paper source from the pop-up menu.

△ **Important:** The names of paper sources that appear in the paper source menus vary according to the paper source options of your printer. △

- To manually print an envelope or a single sheet of paper, transparency film, or labels, select Manual Feed as the paper source. For paper loading instructions, see your printer manual.

continues ►

- To allow the printer to automatically select the paper tray that holds the size of paper chosen for the document, select Auto Select as the paper source. This option is available only on printers that use PostScript level 2, and that have paper trays that can be set to communicate the paper size to the printer. For more information about setting paper trays to hold a specific size paper, see your printer manual.
- To print the first page of a document from one paper source and the rest of the document from a different source, click the First From radio button and then choose the paper sources from the pop-up menus.
- In the Destination option, select Printer to print the document, or select File to save the document as a file of PostScript code. For more information about printing to a file, see “Printing to a File” later in this guide.

3. Click Print.

Printing a document with an automatic cover page

The LaserWriter can automatically print a cover page that provides information about the printed document, such as the document name and the date and time of printing. You can set the printer to print the cover page at the beginning or the end of the document.

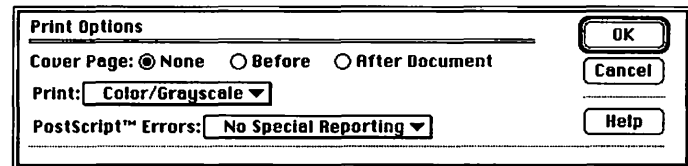
1. Choose Print from the File menu.

The Print dialog box appears.

2. Select the options you want.

3. Click Options.

The Print Options dialog box appears.



4. Click the Before or After Document button to indicate the cover page position you want, or click None to print the document without a cover page.

5. Click OK.

6. Click Print.

Printing color or grayscale documents

When you print a document containing colors or shades of gray, you can choose to maximize either print quality or speed. The Print Options dialog box provides three choices: printing in black and white, printing in color on a color printing device (or in shades of gray on a monochrome printer), or printing in colors or grays calibrated to match those on the computer screen. (Printing calibrated colors and grays is available only on color printers that use PostScript Level 2.)

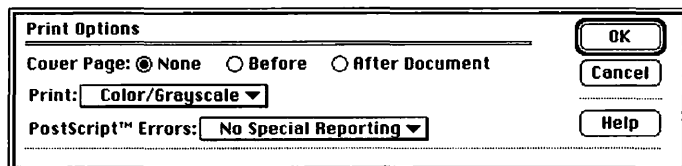
1. Choose Print from the File menu.

The Print dialog box appears.

2. Select the options you want.

3. Click Options.

The Print Options dialog box appears.



4. Choose Black & White, Color/Grayscale, or Calibrated Color/Grayscale from the Print pop-up menu.

- Choose Black & White to print all colored areas in the original document as black or white only, depending on the darkness of the original.
- Choose Color/Grayscale to print the document in color on a color printer, or to print the document in shades of gray that approximate the darkness of the original colored or gray areas.
- Choose Calibrated Color/Grayscale to print the document in color or in shades of gray that closely match the colors and grays displayed on the computer screen.

△ **Important:** Use the Calibrated Color/Grayscale option only with printers that have PostScript level 2. △

5. Click OK.

6. Click Print.

Printing a report of PostScript errors

The LaserWriter can automatically report Postscript errors when they occur during printing. To help track and remedy printing errors, you can have the driver print a detailed report of PostScript errors, display a summary of errors on the computer screen, or not report errors.

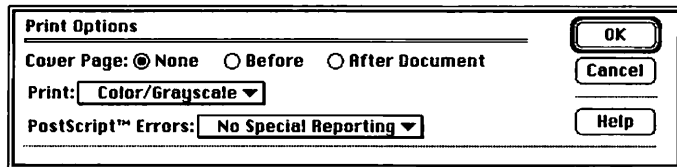
1. Choose **Print** from the **File** menu.

The Print dialog box appears.

2. Select the options you want.

3. Click **Options**.

The Print Options dialog box appears.



4. Choose the PostScript reporting option you want from the **PostScript Errors** pop-up menu.

- Choose No Special Reporting to turn off the error reporting function.
- Choose Summarize on Screen to display messages on screen describing the nature of PostScript errors.
- Choose Print Detailed Report to have the printer print a report describing PostScript errors.

5. Click **OK**.

6. Click **Print**.

Printing a document with FinePrint or PhotoGrade

If your printer supports the FinePrint or PhotoGrade features, you can turn these features on or off before printing a document. The FinePrint and PhotoGrade options don't appear in the Print Options dialog box if your printer does not support them.

You can also use the LaserWriter Utility to preset the printer to automatically print using FinePrint or PhotoGrade. For more information about FinePrint and PhotoGrade, refer to the manual that came with your printer.

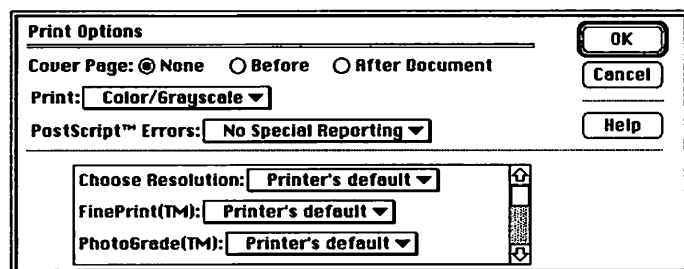
1. Choose Print from the File menu.

The Print dialog box appears.

2. Select the options you want.

3. Click Options.

The Print Options dialog box appears.



If your LaserWriter allows you to select a printing resolution, choose 300 dpi to make the FinePrint and PhotoGrade options available.

4. Choose the option you want from the FinePrint or PhotoGrade pop-up menu.

- Choose On to turn on the FinePrint or PhotoGrade option.
- Choose Off to turn off the FinePrint or PhotoGrade option.
- Choose Printer's Default to set the printer to use the printer's default setting for printing with FinePrint or PhotoGrade. (You can change the printer's default setting for FinePrint or PhotoGrade using the LaserWriter Utility program.)

5. Click OK.

6. Click Print.

Printing to a file

Instead of printing your document on paper, you can save it as a file on disk, recorded in a specific PostScript or Encapsulated PostScript (EPS) file format.

Saving a file in a different format can allow you to transfer documents to another computer or application that can't read the file in its original format. When saving the file on disk, you save it in a format that the other computer or application can open.

You can save the entire document as a standard PostScript file in one of two commonly used formats: ASCII or binary format.

Because some printers use PostScript Level 1 and others use PostScript Level 2, you can save a file with either PostScript Level 1 or 2 to ensure compatibility. If you're uncertain about which PostScript version to choose, choose Level 1. All PostScript printers can use PostScript Level 1 files. To take advantage of the increased printing speeds and functions of printers that use PostScript Level 2, save your file in PostScript Level 2.

To ensure that the file prints or displays using the same fonts that it was created with, you can also choose to include fonts in the file. For example, if you used special fonts in a document, you can include the fonts in the file and a different computer or printer can display or print the document just as you created it. But remember that including fonts in a file increases the file size.

△ **Important:** Including fonts in a file can greatly increase the final file size. Saving fonts in a file with the Unlimited Downloadable Fonts option selected in the Page Setup Options dialog box can result in the creation of extremely large files. △

You can also save a single page of a document as an Encapsulated PostScript (EPS) file. Many different applications and computers can use EPS files. For example, you might save a single-page graphic as an EPS file for transfer to another computer or application that can open such files. (If your document has multiple pages, you must specify which page to save in the EPS file.)

In an EPS file, the information that is used to display the image on the computer screen is different from the information used to print it. When creating an EPS file, you can choose not to include the display information in the file, or you can choose to save the display information as a standard preview image (bitmapped) or as an enhanced preview image (saved as PICT information). Saving a file without the display information reduces the overall EPS file size. Although such an EPS file displays on the Macintosh screen as a blank box, or as a box with an X through it, the file can be printed as it was originally created.

△ **Important:** Some applications may not display a preview image even though you have saved the display image with the file. △

1. Choose Print from the File menu.

The Print dialog box appears.

2. Click the From button.

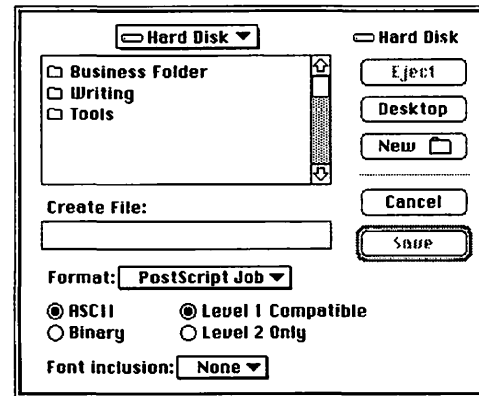
3. Enter the number of the page that you want saved in both the From box and the To box.

Be sure to enter the same page number in both boxes.

4. Select the File button in the Destination options.

5. Click Save.

A dialog box appears that allows you to select the type of PostScript file format and other format options you want.



6. Select the name of the file folder into which you want the PostScript file placed.

If you are using System 7, you can click the New button to create a new folder to hold the file.

continues ►

7. Type a name for the file in the Create File box.

8. Choose the option you want from the Format pop-up menu.

- Choose PostScript Job to create a copy of the PostScript output exactly as it would have been sent to the printer or output device.
- Choose EPS Mac Standard Preview to create a file that has a 72-dpi preview image (bitmapped) for displaying the page on a Macintosh screen. An EPS file created using this option may appear in black and white when placed in other applications.
- Choose EPS Mac Enhanced Preview to create a file that has a preview image saved in QuickDraw PICT format. An EPS file that uses this preview format can allow an application to accurately rescale and redraw the page image.
- Choose EPS No Preview to create a file with no preview image available for display on a Macintosh screen. This format creates a smaller size file and can be used for transferring files to other computers.

9. Select the ASCII or Binary radio button.

- Select ASCII, if necessary, to save the file as a standard PostScript 7-bit ASCII file. ASCII files can be opened by many types of applications and computers.
- Select Binary to save the file in binary code format, which can allow some printers to process and print the file faster. A printer must be set to accept binary format; otherwise print errors may occur. Some types of applications cannot accept binary format.

10. Select a level of PostScript compatibility, if necessary.

- Select Level 1 Compatible to create a file that is compatible with all PostScript printers.
- Select Level 2 Only to create a file that is compatible with only those printers that use PostScript Level 2. Using this option can speed up printing.

11. Choose the font inclusion option you want from the Font Inclusion pop-up menu, if necessary.

- Choose All to create a file that contains all the fonts used in the original document. Choose this option to allow the document to be printed using its original fonts, even if they are not available on the system opening the document.
- Choose All But Standard 13 to create a file that contains all the fonts used in the document in the file, except the standard 13 fonts found on most PostScript printers.

The standard 13 fonts include Times, Helvetica, Courier, and Symbol in the plain, bold, italic, and bold italic styles.

- Choose None to create a file that doesn't contain the downloadable fonts used in the document.

12. Click Save

The file is saved in the selected format.

Turning automatic tray switching on or off

If your LaserWriter can switch automatically between paper cassettes, multipurpose tray, or another paper source, you can turn automatic tray switching on or off. The tray-switching option will not appear in the Print Options dialog box if your printer does not support it.

You can also use the LaserWriter Utility to preset the printer to switch automatically between paper trays. For more information about automatic tray switching, refer to the manual that came with your printer.

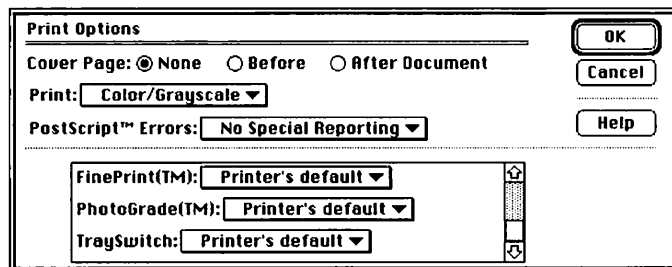
1. Choose Print from the File menu.

The Print dialog box appears.

2. Select the options you want.

3. Click Options.

The Print Options dialog box appears.



continues ►

4. **Choose the tray-switching option you want from the TraySwitch pop-up menu.**
 - Choose On to turn automatic tray switching on .
 - Choose Off to turn automatic tray switching off.
 - Choose Printer's Default to set the printer to use the printer's default setting for automatic tray switching. (You can use the LaserWriter Utility program to change the printer's default setting for automatic tray switching.)
5. **Click OK.**
6. **Click Print.**

Printing a document at 300 or 600 dpi

If your printer can print at resolutions of 300 or 600 dots per inch (dpi), you can select the printing resolution you want when printing a particular document.

You can also use the LaserWriter Utility to preset the printer to print automatically at 300 or 600 dpi each time you print. For more information about selecting resolution, refer to the manual that came with your printer.

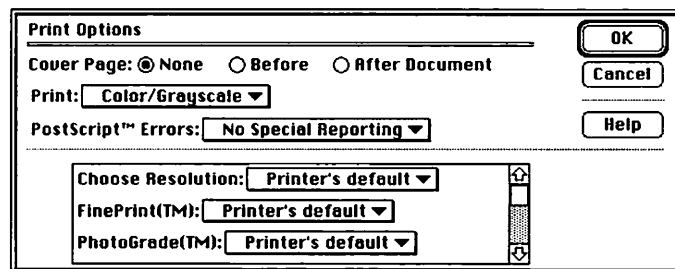
1. Choose Print from the File menu.

The Print dialog box appears.

2. Select the options you want.

3. Click Options.

The Print Options dialog box appears.



4. Choose the resolution you want from the Choose Resolution pop-up menu.

- Choose 600 dpi to print at 600 dpi.
- Choose 300 dpi to print at 300 dpi.
- Choose Printer's Default to set the printer to use the printer's default setting for printing resolution. (You can use the LaserWriter Utility program to change the printer's default resolution.)

5. Click OK.

6. Click Print.

LaserWriter 8.0 PPD Files

When you install the LaserWriter 8.0 software using the Easy Install option, the installer installs PPD files for all standard LaserWriter printers. Your *LaserWriter 8.0 Install* disk also holds additional PPD files for printers with specific PostScript versions and memory capacities. You can use the Installer to custom install specific PPD files that you need.

The *LaserWriter 8.0 Install* disk holds the following PPD files: (Files marked with [†] are installed automatically when you use the Easy Install option. Files marked with [°] are set up for printers with 8 megabytes of memory. Files marked with [§] are set up for printers with 4 megabytes of memory.)

LaserWriter[†]

LaserWriter II NT[†]

LaserWriter II NTX[†]

LaserWriter II NTX v50.5[†]

LaserWriter II NTX v51.8[†]

LaserWriter II NTX-J v50.5[†]

LaserWriter Personal NT[†]

LaserWriter Personal NTR[†]

LaserWriter Plus v38.0[†]

LaserWriter Plus v42.2[†]

LW Pro 600 v2010.130 4MB

LaserWriter Pro 600 v2010.130^{†°}

LaserWriter Pro 630 v2010.130[†]

LaserWriter IIf v2010.113^{†§}

LaserWriter IIf v2010.130^{†§}

LaserWriter IIf v2010.113 2MB

LaserWriter IIf v2010.113 8MB

LaserWriter IIf v2010.130 8MB

LaserWriter IIg v2010.113^{†°}

LaserWriter IIg v2010.130^{†°}

LaserWriter IIg v2010.113 5MB

LaserWriter IIg v2010.130 5MB



Key combinations for Zeal font

Overstrike keys

Keys	Character	Comments	Example
^	☐	Square overstrike	☐
~	⊗	Not allowed overstrike	⊗
Op-e, Op-e	◯	Circle / Yes overstrike	◯

Op=Option, Sh=Shift

Label ends

Keys	Character	Comments	Example
!	!̣	! for labels	!̣
"	"̣	• for labels	"̣
#	#̣	# for labels	#̣123
\$	\$̣	\$ for labels	\$̣99.95
%	%̣	% for labels	%̣50% OFF
&	&̣	& for labels	&̣B&H
'	'̣	' for labels	'̣O'TOOLE

((̣	Round opener for labels	(̣12
))̣	Round closer for labels)̣12
*	*̣	* for labels	*̣O*Ṣ
+	+̣	Open Apple for labels	+̣CTRL-⌘
,	,	Command Key for labels	,̣OPTION-⌘
-	-̣	. for labels	-̣DATA-BASE
.	.	. for labels	.̣V2.2
>	>̣	Arrow closer for labels	>̣RIGHT WING
?	?̣	Q for labels	?̣ ?̣ ?̣
{	{̣	Round closer for labels	{̣CSPN
}	}̣	Round closer for labels	}̣12
/	/̣	Connects for label	/̣⌘⌘⌘⌘
Op-k	⌘	Apple logo for labels	⌘

Op=Option, Sh=Shift

Numbers

Keys	Character	Comments	Example
0	0̣	0 for labels	0̣ROOM 100
1	1̣	1 for labels	1̣ROOM 123
2	2̣	2 for labels	2̣ROOM 123
3	3̣	3 for labels	3̣ROOM 123
4	4̣	4 for labels	4̣ROOM 456
5	5̣	5 for labels	5̣ROOM 456

6	<u>6</u>	6 for labels	ROOM 456
7	<u>7</u>	7 for labels	ROOM 789
8	<u>8</u>	8 for labels	ROOM 789
9	<u>9</u>	9 for labels	ROOM 789
:	<u>:</u>	: for labels	12:00 P.M.
:		Vertical line for labels	RED
<	<	Arrow opener for labels	LEFT WING

Op=Option, Sh=Shift

Letters

Keys	Character	Comments	Example
A	<u>A</u>	A for labels	ABCDE
B	<u>B</u>	B for labels	ABCDE
C	<u>C</u>	C for labels	ABCDE
D	<u>D</u>	D for labels	ABCDE
E	<u>E</u>	E for labels	ABCDE
F	<u>F</u>	F for labels	FGHIJK
G	<u>G</u>	G for labels	FGHIJK
H	<u>H</u>	H for labels	FGHIJK
I	<u>I</u>	I for labels	FGHIJK
J	<u>J</u>	J for labels	FGHIJK

K	<u>K</u>	K for labels	FGHIJK
L	<u>L</u>	L for labels	LMNOP
M	<u>M</u>	M for labels	LMNOP
N	<u>N</u>	N for labels	LMNOP
O	<u>O</u>	O for labels	LMNOP
P	<u>P</u>	P for labels	LMNOP
Q	<u>Q</u>	Q for labels	QRSTU
R	<u>R</u>	R for labels	QRSTU
S	<u>S</u>	S for labels	QRSTU
T	<u>T</u>	T for labels	QRSTU
U	<u>U</u>	U for labels	QRSTU
V	<u>V</u>	V for labels	VWXYZ
W	<u>W</u>	W for labels	VWXYZ
X	<u>X</u>	X for labels	VWXYZ
Y	<u>Y</u>	Y for labels	VWXYZ
Z	<u>Z</u>	Z for labels	VWXYZ
[[Square opener for labels	ESPN
\	\	Connects for label	<?>
]]	Square closer for labels	A&E
-	-	Space for labels	A A
Op-Sh-p	P	Parking	P P ®
Op-b	?	Information	? ? ®
Op-9	P	Pluto	P

Op=Option, Sh=Shift

Arrows

Keys	Character	Comments	Example
a	↕	Direction Indication	↕ ↕ ↕
b	↗	Direction Indication	↗ ↗ ↗
c	⇒	Direction Indication	⇒ ⇒ ⇒
d	↘	Direction Indication	↘ ↘ ↘
e	⇩	Direction Indication	⇩ ⇩ ⇩
f	↖	Direction Indication	↖ ↖ ↖
g	⇐	Direction Indication	⇐ ⇐ ⇐
h	↖	Direction Indication	↖ ↖ ↖
i	↑	Direction Indication	↑ ↑ ↑
j	↗	Direction Indication	↗ ↗ ↗
k	→	Direction Indication	→ → →
l	↘	Direction Indication	↘ ↘ ↘
m	⇩	Direction Indication	⇩ ⇩ ⇩
n	↖	Direction Indication	↖ ↖ ↖
o	←	Direction Indication	← ← ←
p	↖	Direction Indication	↖ ↖ ↖
q	△	Direction Indication	△
r	▽	Direction Indication	▽
s	▷	Direction Indication	▷
t	△	Direction Indication	△
u	▽	Direction Indication	▽
v	▷	Direction Indication	▷
w	△	Direction Indication	△
x	▽	Direction Indication	▽
Op-p	▲	Direction Indication	▲ ▲ ▲

Op-q	◀	Direction Indication	◀
Op-r	▶	Direction Indication	▶ ▶ ▶
Op-s	◀	Direction Indication	◀
Op-t	▼	Direction Indication	▼
Op-u, Op-u	▶	Direction Indication	▶
Op-v	◀	Direction Indication	◀ ◀ ◀
Op-w	▼	Direction Indication	▼

























Op=Option, Sh=Shift

Time

Keys	Character	Comments	Example
Op-Sh-a	⌚	Noon Clock	Meeting at ⌚
Op-Sh-b	⌚	One O'Clock	Meeting at ⌚
Op-Sh-c	⌚	Two O'Clock	Meeting at ⌚
Op-Sh-d	⌚	Three O'Clock	Meeting at ⌚
Op-Sh-e	⌚	Four O'Clock	Meeting at ⌚
Op-Sh-f	⌚	Five O'Clock	Meeting at ⌚
Op-`, Sh-g	⌚	Six O'Clock	Meeting at ⌚
Op-Sh-h	⌚	Seven O'Clock	Meeting at ⌚
Op-`, Sh-e	⌚	Eight O'Clock	Meeting at ⌚
Op-Sh-j	⌚	Nine O'Clock	Meeting at ⌚
Op-Sh-l	⌚	Ten O'Clock	Meeting at ⌚
Op-Sh-n	⌚	Eleven O'Clock	Meeting at ⌚
Op-Sh-i	⌚	Midnight Clock	Meeting at ⌚

Op=Option, Sh=Shift

Astrology

Keys	Character	Comments	Example
Op-e, Sh-e		Aries	
Op-n, Sh-n		Taurus	
Op-u, Sh-o		Gemini	
Op-u, Sh-u		Cancer	
Op-e-a		Leo	
Op-`, a		Virgo	
Op-i, a		Libra	
Op-u, a		Scorpio	
Op-n, a		Sagittarius	
Op-a		Capricorn	
Op-c		Aquarius	
Op-e, e		Pisces	
Op-`, e	♈	Aries Symbol	♈
Op-i, e	♉	Taurus Symbol	♉
Op-u, e	♊	Gemini Symbol	♊
Op-e, i	♋	Cancer Symbol	♋
Op-`, i	♌	Leo Symbol	♌
Op-i, i	♍	Virgo Symbol	♍
Op-u, i	♎	Libra Symbol	♎
Op-n, n	♏	Scorpio Symbol	♏
Op-e, o	♐	Sagittarius Symbol	♐
Op-`, o	♑	Capricorn Symbol	♑
Op-i, o	♒	Aquarius Symbol	♒
Op-u, o	♓	Pisces Symbol	♓





































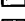






Op=Option, Sh=Shift

Symbols

Keys	Character	Comments	Example
@	®	Registration Mark	®
Op-n, o	☕	Cup and Saucer	☕ ☕
Op-e, u	🏨	Hotel/Motel	🏨 🏨
Op-`, u	🎣	Fishing	🎣 🎣
Op-i, u	❄️	Air Conditioned	❄️ ❄️
Op-u, u	🛀	Tub	🛀 🛀
Op-Sh-8	🆘	First Aid	🆘
Op-4	♂	Mars/Male	♂
Op-3	♁	Earth	♁
Op-6	♄	Saturn	♄
Op-8	♆	Neptune/Sea	♆
Op-7	♅	Uranus	♅
Op-g	🎁	Gift/Gift Shop	🎁 🎁
Op-2	♀	Venus/Female	♀
Op-=	🛏	Jumper Over Mat	🛏 🛏
Op-Sh-'	🚶	Walking Man	🚶 🚶
Op-Sh-o	🏥	Hospital	🏥
Op-5	♃	Jupiter	♃
y	☼	Sun Outline	☼
z	☀	Sun Filled	☀
	💡	Idea Bulb	💡
Op-Sh-+	🏊	Swim/Beach/Pool	🏊 🏊
Op-<	🍸	Martini Glass	🍸 🍸 🍸

Op->		Fork and Knife	
Op-u, Sh-a	✈	Jet Plane	
Op-y	😄	Comedy	
Op-m	♂	Man/Men's	
Op-d	🚬	Smoking/Cigarette	
Op-Zero	👍	Thumbs Up	
Op-z	😞	Drama	
Op-'	👎	Thumbs Down	
Op-o	🛑	Stop Hand	
Op-m	👧	Girl/Child	
Op-l	♿	Mercury/Neuter	♿
Op-l (el)	👦	Boy/Child	
Op-f	👩	Woman/Women's	
Op-x	🚲	Bicycle & Rider	
Op-j	🚴	Bicycle Standing	
Op-\	🏃	Running Person	
Op-Sh-\	👆	Up Pointing Key	
Op-;	📻	Radio	
`	☂	Water & Umbrella	
Op-`, Sh-a	⚛	Atoms & Nuclei	
Op-n, Sh-a	💀	Skull & Bones	
Op-n, Sh-o	👤	Person Digging	
Op-Sh-q	📺	TV Set	

Op-hyphen	🔗	Idea Bulb	💡
Op-Sh-hyphen	🚗	Oncoming Car	🚗
Op-	⚓	Anchor	⚓
Op-Sh-	⚡	Bolt	
Op-	🦋	Fly	
Op-Sh-	🐢	Slow/Turtle	
Op-/	🐰	Fast/Rabbit	
Op-Sh-v	🦆	Duck	
Op-u, y	🏠	Lighthouse	
Op-u, Sh-y	🔒	Lock	🔒
Op-Sh-1	🌑	Black Moon	
Op-Sh-2	🌒	Moon Left	
Op-Sh-3	☺	White Moon	
Op-Sh-4	🌒	Moon Right	
Op-Sh-5	🌐	N & S America	
Op-Sh-6	🌐	Afr., Eur. & Mid. E.	
Op-Sh-7	🌐	Asia & Australia	
Op-Sh-9	🏥	Medical Staff	
=	⛺	Campsite	
Op-Sh-Zero	🚢	Boat/Ship/Ferry	
Op-Sh-w	📄	Information	
Op-i, Sh-a	🔄	Circular Arrow	🔄
Op-i, Sh-e	☎	Telephone Receiver	
Op-e, Sh-a	♻	Recycle	♻
Op-u, Sh-e	🦖	Dinosaur/Old	

Op-e, Sh-i		Camera	  
Op-Sh-k		Apple logo	 
Op-e, Sh-u		Dish	  
Op-i, Sh-u		Peace Sign	  
Op-`, Sh-u		Comet	  
Op-Sh-,		Luggage	  
Op-Sh-.		Prop-Plane	  
Op-h		Handicapped	 
Op-Sh-z		Ferry Boat	
Op-Sh-g		Book	  
Op-Sh-x		Movie Camera	  
Op-Sh-t		Skier	  

Op=Option, Sh=Shift

The Apple Publishing System

This Apple manual was written and edited on a desktop publishing system using Apple Macintosh computers and QuarkXPress. Proof pages were created on Apple LaserWriter printers and on the QMS ColorScript 100 color printer. Final pages were produced in QuarkXPress and output directly to separated film on a PostScript® imagesetter. Line art was created with Adobe Illustrator. Cover art was produced with Adobe Photoshop. Screen shots were created and modified with system software, Exposure, SuperPaint, and MacPaint.

Text type is Apple's corporate font, a condensed version of Garamond. Ornaments are custom symbols designed for Apple Computer. Some elements, such as computer voice, are set in Apple Courier, a fixed-width font.

PostScript, the LaserWriter page-description language, was developed by Adobe Systems Incorporated.



Apple Computer, Inc.
20525 Mariani Avenue
Cupertino, California 95014-6299
(408) 996-1010
TLX 171-576

030-4157-A
Printed in U.S.A.