



iMac G5 User's Guide

Includes setup, expansion, and
troubleshooting information for
your iMac G5 computer



iMac G5

User's Guide

Includes setup, expansion, and
troubleshooting information for
your iMac G5 computer

Apple Computer, Inc.
© 2004 Apple Computer, Inc. All rights reserved.

Under the copyright laws, this manual may not be copied, in whole or in part, without the written consent of Apple.

The Apple logo is a trademark of Apple Computer, Inc., registered in the U.S. and other countries. Use of the "keyboard" Apple logo (Option-Shift-K) for commercial purposes without the prior written consent of Apple may constitute trademark infringement and unfair competition in violation of federal and state laws.

Every effort has been made to ensure that the information in this manual is accurate. Apple is not responsible for printing or clerical errors.

Apple
1 Infinite Loop
Cupertino, CA 95014-2084
408-996-1010
www.apple.com

Apple, the Apple logo, AirPort, Apple Store, AppleTalk, Final Cut Pro, FireWire, iLife, iMac, iMovie, iPod, iTunes, Mac, the Mac logo, Mac OS, Macintosh, and QuickTime are trademarks of Apple Computer, Inc., registered in the U.S. and other countries.

Finder, iCal, iDVD, iPhoto, iPod, iSight, Rendezvous, Safari, and SuperDrive are trademarks of Apple Computer, Inc.

AppleCare is a service mark of Apple Computer, Inc., registered in the U.S. and other countries.

Mac is a service mark of Apple Computer, Inc.

The Bluetooth word mark and logos are owned by the Bluetooth SIG, Inc. and any use of such marks by Apple Computer, Inc. is under license.

ENERGY STAR® is a U.S. registered trademark.

Other company and product names mentioned herein are trademarks of their respective companies. Mention of third-party products is for informational purposes only and constitutes neither an endorsement nor a recommendation. Apple assumes no responsibility with regard to the performance or use of these products.

Manufactured under license from Dolby Laboratories. "Dolby," "Pro Logic," and the double-D symbol are trademarks of Dolby Laboratories. Confidential Unpublished Works, © 1992–1997 Dolby Laboratories, Inc. All rights reserved.

The product described in this manual incorporates copyright protection technology that is protected by method claims of certain U.S. patents and other intellectual property rights owned by Macrovision Corporation and other rights owners. Use of this copyright protection technology must be authorized by Macrovision Corporation and is intended for home and other limited viewing uses only unless otherwise authorized by Macrovision Corporation. Reverse engineering or disassembly is prohibited.

Apparatus Claims of U.S. Patent Nos. 4,631,603, 4,577,216, 4,819,098 and 4,907,093 licensed for limited viewing uses only.

Simultaneously published in the United States and Canada.

Contents

Chapter 1	5 Getting Started
	8 What's Next?
	9 What to Do When You Have Finished Using Your iMac G5
Chapter 2	11 Getting to Know Your iMac G5
	12 iMac G5 – Front View
	14 iMac G5 – Back View
	16 Learning About Mac OS X
	17 Customizing Your Desktop and Setting Your Preferences
	18 Connecting to a Printer
	19 Playing a CD and Connecting Headphones
	19 Keeping Your Software Up to Date
	20 Connecting a Camera or Other FireWire Device
	20 Connecting to a Network
	20 Using the Internet
	20 Transferring Files to Another Computer
	21 When an Application Freezes
	22 Getting Answers to Your Questions Using Mac OS Help
	22 Using Applications
Chapter 3	23 Using Your Computer
	24 Universal Serial Bus (USB)
	26 FireWire
	28 AirPort Extreme Wireless Internet and Networking
	29 Bluetooth Wireless Technology
	31 Ethernet (10/100Base-T)
	32 Audio Support
	34 External Video Support (VGA, Composite, and S-Video)
	36 Using Your Optical Drive
	38 Keyboard Controls
	39 Securing Your Computer
Chapter 4	41 Enhancing Your Computer
	41 Installing Additional Memory

	47	Installing an AirPort Extreme Card
	51	Replacing the Internal Backup Battery
Chapter 5	57	Troubleshooting
	57	Problems That Prevent You From Using Your Computer
	59	Reinstalling the Software That Came With Your Computer
	60	Other Problems
	61	Locating Your Product Serial Number
	62	Using Apple Hardware Test
Appendix A	63	Specifications
Appendix B	65	Care, Use, and Safety Information
	65	Cleaning Your iMac G5
	65	Carrying Your iMac G5
	66	Safety Instructions for Setting Up and Using Your Computer
	67	Connectors and Ports
	67	Avoid Hearing Damage
	67	Ergonomics
	68	Apple and the Environment
Appendix C	69	Connecting to the Internet
	71	Setup Assistant Worksheet
	73	Setting Up Your Internet Connection Manually
	74	Dial-Up Connection
	76	DSL, Cable Modem, or LAN Internet Connections
	82	AirPort Extreme Wireless Connection
	85	Troubleshooting Your Connection
	87	Communications Regulation Information
Index	93	

Your iMac G5 has been designed so that you can set it up quickly and start using it right away. If you have never used an iMac G5 or are new to Macintosh computers, read this section for instructions on getting started.

If you are an experienced user, you may already know enough to get started. Be sure to look over the information in Chapter 2, "Getting to Know Your iMac G5," to find out about the new features of this iMac G5.

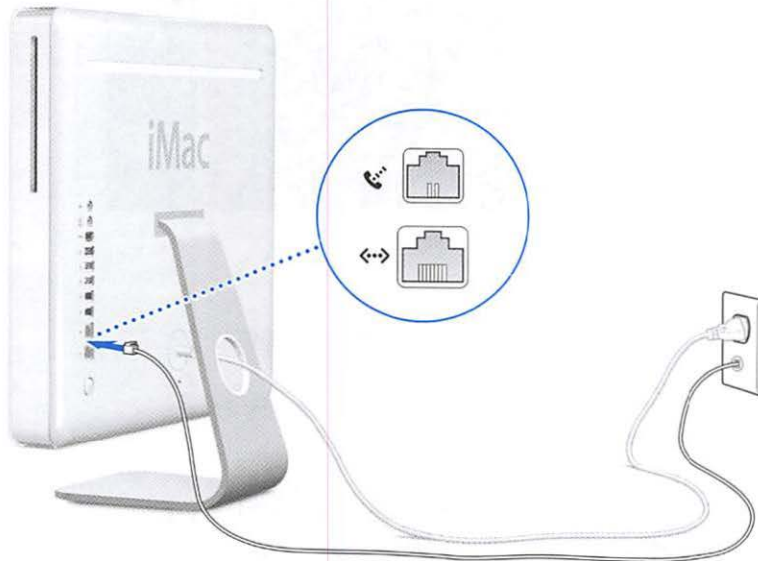


Follow the steps on the next two pages to set up your iMac G5.

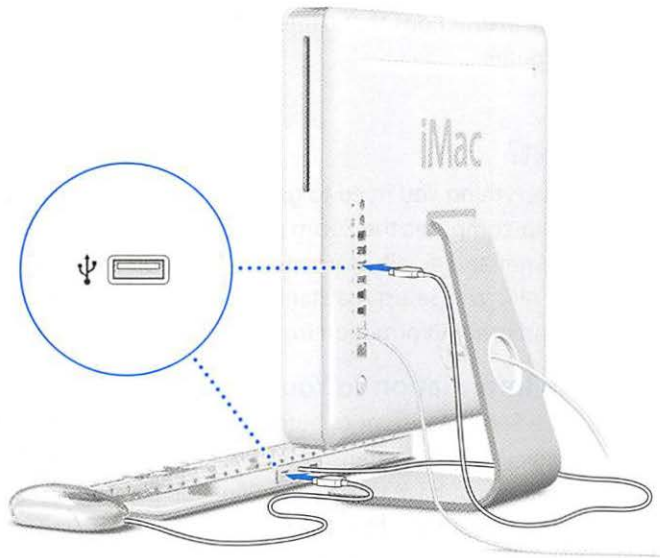
Step 1: Plug in the power cord.



Step 2: To access the Internet, connect an Ethernet cable or phone cord.



Step 3: Connect the keyboard and mouse cables.



Step 4: Press the power button (⏻) to turn on your computer.



Using a Wireless Keyboard and Mouse

If you purchased an Apple Wireless Keyboard and Apple Wireless Mouse with your iMac G5, see the instructions that came with the keyboard and mouse to set them up with your computer.

What's Next?

You've done everything you need to get your iMac G5 up and running. The first time you turn on your computer, the Setup Assistant starts. The Setup Assistant helps you enter your Internet and email information and set up a user on your computer. If you already have a Mac, the Setup Assistant can help you automatically transfer files, applications, and other information from your previous Mac to your new iMac G5.

Transferring Information to Your iMac G5

You can use the Setup Assistant to automatically transfer information from another Mac to your new iMac G5. To transfer information, make sure of the following:

- Your other Mac must have built-in FireWire and support FireWire Target Disk Mode.
- Your other Mac must have Mac OS X v 10.1 or later installed.
- You must have a standard 6-pin to 6-pin FireWire cable.

The Setup Assistant takes you through the process of transferring your information—just follow the onscreen instructions. Transferring information to your iMac G5 does not affect the information on your other Mac. Using the Setup Assistant, you can transfer:

- User accounts, including preferences and email
- Network settings, so your new computer is automatically set up to work with the same network settings as your other Mac
- Applications folder so that the applications you used on your other Mac are now on your new iMac G5 (you may have to reinstall some of the applications you transfer)
- Files and folders on the hard disk and partitions. This gives you easy access to the files and folders you used on your old Mac.

If you don't use the Setup Assistant to transfer information when you first start up your iMac G5, you can do it later. Go to the Applications folder, open Utilities, and double-click the Setup Assistant icon.

Setting Up Your iMac G5 for the Internet

If you didn't transfer your network settings, the Setup Assistant can also take you through the process of setting up your computer to connect to the Internet. For home users, Internet access requires an account with an Internet service provider (ISP). Fees may apply.

- If you don't already have an Internet account, the assistant can set you up with one.
- If you already have an Internet account, see Appendix C, "Connecting to the Internet," on page 69 for information you'll need to enter.

Additional Information

If you would like additional information, see the following:

To learn about...	See...
Shutting down your computer or putting it to sleep	"What to Do When You Have Finished Using Your iMac G5" below.
An overview of the different parts of your iMac G5 and some common tasks	Chapter 2, "Getting to Know Your iMac G5."
The additional information available in the onscreen help	"Getting Answers to Your Questions Using Mac OS Help" on page 22.
Using a specific feature of your iMac G5, or connecting a digital device, such as an iPod	Chapter 3, "Using Your Computer."
Installing memory or an AirPort Extreme Card	Chapter 4, "Enhancing Your Computer."
What to do if you have a problem with your iMac G5	Chapter 5, "Troubleshooting."

What to Do When You Have Finished Using Your iMac G5

When you have finished working with your iMac G5, you have two options.

Put Your iMac G5 to Sleep to Save Energy

If you will be away from your iMac G5 for less than a few days, put the computer to sleep. When the computer is in sleep, its screen is dark and a small white light below the lower-right corner of the display pulsates. You can quickly wake the computer and bypass the startup process.

To put the computer to sleep quickly, do one of the following:

- Choose Apple () > Sleep.
- Press the power button on the back of the computer.
- Choose Apple () > System Preferences, click Energy Saver, and set a sleep timer.

To wake the computer, press any key on the keyboard. When the computer wakes from sleep, your applications, documents, and computer settings are exactly as you left them.

Shut Down Your iMac G5

If you will not use your iMac G5 for more than a few days, shut it down.

- Choose Apple () > Shut Down.

Warning: Shut down your iMac G5 before moving it. Moving your computer while the hard disk is spinning can damage the hard disk, causing loss of data or the inability to start up from the hard disk.

This chapter gives you some basic information you'll need to know about your iMac G5.

Read on for an overview of the different parts of your computer and Mac OS X, and summary information on common tasks such as customizing the way your desktop looks, connecting to a printer, playing a CD, connecting a digital camera, using the Internet, getting answers when you need help, and more.

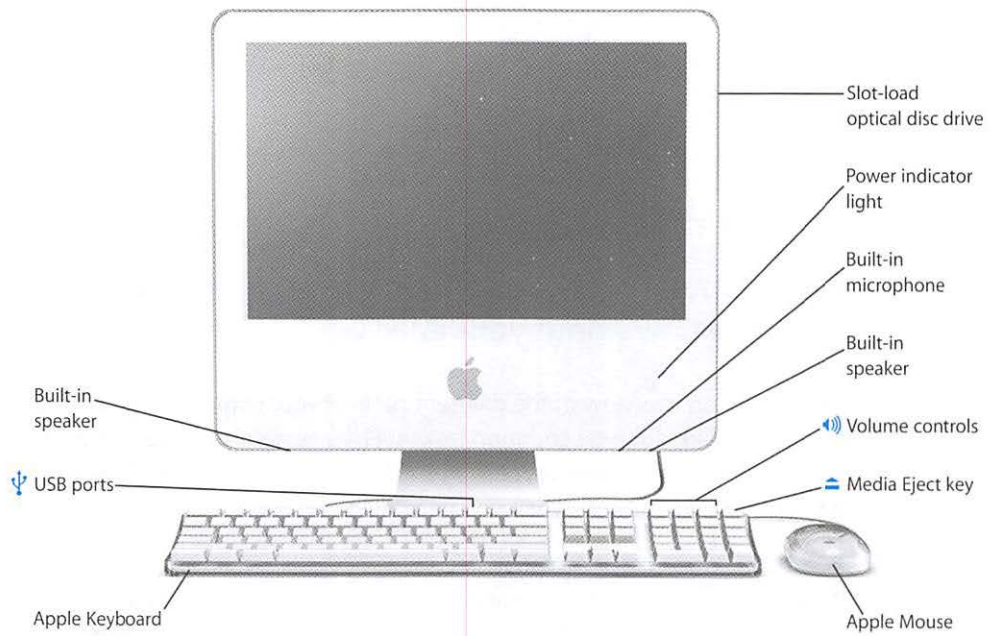
For the Latest Information

Because Apple frequently releases new versions and updates to its system software, images shown in this book may be slightly different from what you see on your screen.

The Apple website, at www.apple.com, links you to the latest Apple news, free downloads, and online catalogs of software and hardware for your iMac G5.

You can also find the manuals for many Apple products and technical support for all of Apple's products on the Service and Support website at www.apple.com/support.

iMac G5 – Front View



Slot-load optical disc drive

Your computer has a slot-load DVD-ROM/CD-RW Combo drive or a SuperDrive. Both drives can read CD-ROM discs, photo CDs, standard audio discs, DVD discs, and DVD movies, and write music, documents, and other digital files to CD-R and CD-RW discs. If you have a SuperDrive, you can also burn your own iMovie creations on DVD using iDVD or write files and documents to blank DVD-R discs using the Finder.

Power indicator light

A white light indicates the computer is in sleep. When your iMac G5 is on, this light is off.

Built-in microphone

Record sounds directly on your iMac G5 or talk with friends live over the Internet using the included iChat AV application.

Built-in speakers

Listen to music, movies, games, and multimedia.

**Volume controls**

Increase or decrease the volume of the sound coming from the built-in speakers and sound output port.

**Media Eject key**

Press and hold this key to eject a CD or DVD disc. You can also eject a disc by dragging its desktop icon to the Trash.

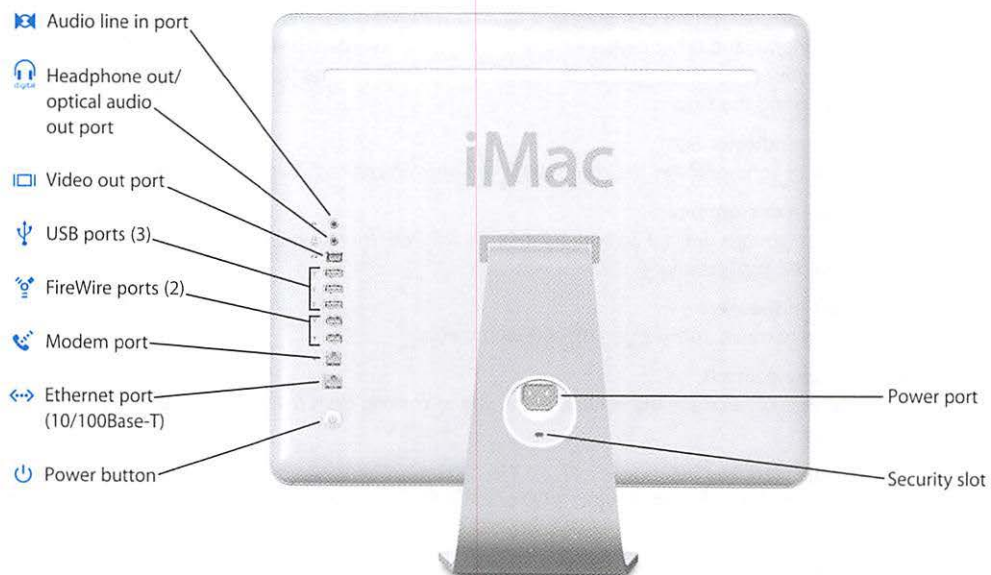
Apple Mouse



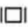








A precision optical mouse you can use on almost any surface, no mouse pad required.

**Two USB (Universal Serial Bus) 1.1 ports on the Apple Keyboard**

Connect low-power USB 1.1 devices to your iMac G5's keyboard, such as mice, digital cameras, and joysticks. Connect your Apple Mouse to one of the keyboard USB ports. (There are also three high-speed USB 2.0 ports on the back of your computer.)

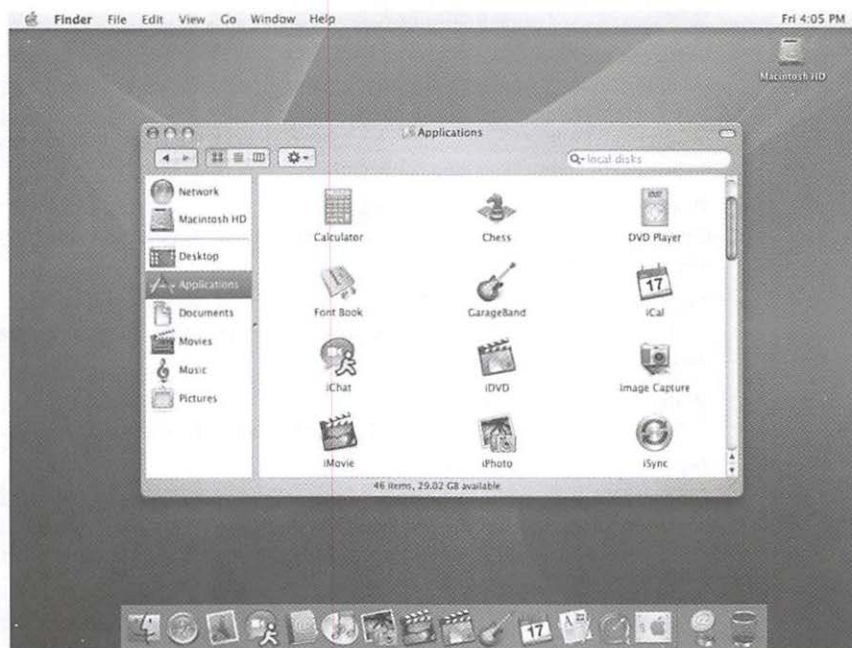
iMac G5 – Back View



-
-  **Audio line in port**
Input audio into your iMac G5 from a line-level microphone or other audio equipment.
-  **Headphone out/optical audio out port**
Connect headphones or other sound output devices. Or connect your iMac G5 to a receiver, home theater system, or other digital audio equipment using an optical audio cable with a mini-plug jack.
-  **Video out port**
Using the optional Apple VGA Display Adapter (available at www.apple.com/store), connect an external monitor or projection device that uses a VGA connector. Using the optional Apple Video Adapter (available at www.apple.com/store), connect a television, VCR, or other video device that uses an S-video or composite video connector.
-  **Three USB (Universal Serial Bus) 2.0 ports**
Connect printers, Zip and other disk drives, digital cameras, joysticks, and more. Connect both USB 1.1 and high-speed USB 2.0 devices.
-  **Two FireWire 400 ports**
Connect high-speed external devices, such as an iPod, digital video cameras, and external storage devices.
-  **Modem port (on some models)**
Connect a standard phone line directly to the internal 56K v.92 modem.
-  **Ethernet port (10/100Base-T)**
Connect to a high-speed 10/100Base-T Ethernet network, connect a DSL or cable modem, or connect to another computer and transfer files. The Ethernet port automatically detects other Ethernet devices. You don't need an Ethernet crossover cable to connect to other Ethernet devices.
-  **Power button**
Turn on your iMac G5 or put it to sleep. Press and hold to reset during troubleshooting.
-  **Power port**
Connect the computer's power cord.
- Security slot**
Attach a lock and cable to prevent theft (available at www.apple.com/store).
- Memory access (inside)**
Your iMac G5 comes with at least 256 megabytes (MB) of 400 MHz, PC 3200 Double Data Rate Synchronous Dynamic Random Access Memory (DDR-SDRAM). You can add more memory to your iMac G5, up to a total of 2 GB. For more information and instructions on installing memory, see "Installing Additional Memory" on page 41.
-  **AirPort Extreme Card slot (inside)**
An AirPort Extreme Card in your computer allows you to connect to a wireless network. Your iMac G5 may have come with an AirPort Extreme Card already installed. If not, you can purchase an AirPort Extreme Card and install it yourself. See "Installing an AirPort Extreme Card" on page 47.
-  **Bluetooth® wireless technology (inside)**
With the internal Bluetooth module (optional) you can connect wirelessly to devices, such as Bluetooth mobile phones, PDAs, printers, and the Apple Wireless Keyboard and Apple Wireless Mouse (you can purchase an Apple Wireless Keyboard and Mouse at www.apple.com/store).
-

Learning About Mac OS X

Your computer comes with Mac OS X, which includes an elegant user interface, advanced graphics capabilities, and added system stability and performance.



When you're ready to learn more about Mac OS X and the award-winning iLife applications that came with your computer, see the *Welcome to Panther* booklet that came with your iMac G5. Also open Mac OS Help and browse the information there. You'll find plenty of information for new users, experienced users, and people switching to the Mac. If you experience any problems while using Mac OS X, see the troubleshooting tips in the back of this book or choose Help > Mac Help from the menu bar at the top of the screen.

For information about the compatibility of software applications with Mac OS X, or to read more about Mac OS X, check the Apple website: www.apple.com/macosx.

Note: If you want to use Mac OS 9 applications with your computer, you have to install Mac OS 9 (see "Installing Mac OS 9" on page 60). Mac OS 9 can't be installed as the primary operating system on your iMac G5 and you can't start up your computer in Mac OS 9.

Customizing Your Desktop and Setting Your Preferences

You can quickly make your desktop look the way you want using System Preferences. Choose Apple () > System Preferences from the menu bar.



Feel free to make changes and experiment with the following:

- **Desktop & Screen Saver:** Select this preference pane to change the background color or pattern of your desktop, or change it to a photo or image you like. You can also choose an eye-catching screen effect that will appear on your screen when the computer is left idle.
- **Dock:** Select this preference pane to change the look, location, and behavior of your Dock.
- **Appearance:** Select this preference pane to change the colors of buttons, menus, windows, and highlight colors, among other options.

As you get to know your computer, explore the other System Preferences. It is your command center for most settings on your iMac G5. For more information, open Mac OS Help and search for "System Preferences" or for the specific preference you want to change.

Connecting to a Printer

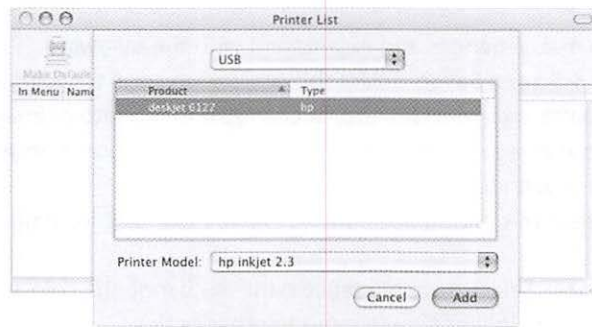
The drivers for most printers are built into Mac OS X. To use a printer with your iMac G5, follow the instructions that came with the printer to install any required software and connect the printer to your computer.

After connecting your printer, use the Print & Fax pane of System Preferences to select your printer for use.

Note: If you have an AirPort Extreme Card installed in your iMac G5 and you have an AirPort Extreme Base Station, you can connect a USB printer to the base station (instead of connecting it to your computer) and print wirelessly.

To set up a printer:

- 1 Open System Preferences and click the Print & Fax icon.
- 2 Click the Set Up Printers button.
- 3 Click the Add button.
- 4 Choose the type of connection for your printer (USB or Rendezvous in most cases).



To add a USB printer connected to an AirPort Extreme Base Station, choose Rendezvous from the pop-up menu.

- 5 Select or enter your printer information and click Add.

Note: If you're connecting to a printer via a network, you may need to know the network name or address of the printer to select it. Ask your network administrator.

Monitoring Printing

Once you've sent a document to a printer, you can monitor, stop, or put printing temporarily on hold.

To monitor printing:

- Click the printer icon in the Dock to open the printer window.

You can now see the print jobs in the print queue and work with them. For more information, open Mac OS Help (see page 22) and search for "printing."

Playing a CD and Connecting Headphones

If you'd like to listen to music while you work with your iMac G5, insert a music CD in your optical drive. iTunes, an easy-to-use music player, opens automatically. You can also connect headphones with a mini-jack to the headphone out/optical audio out port (🎧) of your iMac G5 to listen privately.

To learn more about iTunes:

- Open iTunes and choose Help > iTunes and Music Store Help.

To learn more about your optical drive, see "Using Your Optical Drive" on page 36.

Keeping Your Software Up to Date

You can connect to the Internet and automatically download and install the latest free software versions, drivers, and other enhancements from Apple.

When you are connected to the Internet, Software Update checks Apple's servers to see if any updates are available for your computer. You can set your Mac to check the Apple server periodically and download and install updated software.

To check for updated software:

- 1 Choose Apple (🍏) > Software Update. The Software Update window opens. If there are any updates available, they appear in a list.
- 2 Click the checkbox to select the items you want to install, then click Install. Type an administrator name and password (the name and password you used when you first set up your computer).

When the updates complete, Software Update checks for updates again. It does this because some updates require that you have installed previous updates. For more information, search for "Software Update" in Mac OS Help (see page 22).

Connecting a Camera or Other FireWire Device

If you have an iPod, iSight camera, FireWire digital video camera, or other device that has a FireWire connector, you can connect it to your iMac G5. Follow the installation instructions that came with your device. For more information about FireWire, see “FireWire” on page 26.

Connecting to a Network

If you want to connect your iMac G5 to an Ethernet network, cable or DSL modem, or a wireless network, see “Ethernet (10/100Base-T)” on page 31 and “AirPort Extreme Wireless Internet and Networking” on page 28 for more information about setting up an Ethernet or AirPort connection. Also open Mac OS Help (see page 22) and search for “Ethernet” or “AirPort” for further help.

Using the Internet

When you first set up your iMac G5, you were instructed on how to connect to the Internet. If you need to change to a different type of connection, such as a DSL or cable modem, Ethernet local area network (LAN), or AirPort Extreme network, you can find more information in Appendix C, “Connecting to the Internet,” on page 69.

Transferring Files to Another Computer

You have several ways to transfer files or documents to or from your iMac G5.

- You can easily transfer files using the Setup Assistant. For more information, see “Transferring Information to Your iMac G5” on page 8.
- You can transfer files via the Internet using .Mac or another Internet account. Go to www.mac.com for more information.
- If your computer is connected to an Ethernet network, you can transfer files to another computer on the network. To access another server or computer, open a Finder window and click Network. Or if you know the name or network address of the computer, choose Go > Connect to Server from the Finder menu bar.
- You can create a small Ethernet network by connecting an Ethernet cable from your iMac G5 to another computer’s Ethernet port. For more information, open Mac OS Help and search for “Connecting two computers.”
- You can also connect to another Mac using a FireWire cable. Your iMac G5 appears as a disk drive on the other computer and you can transfer files. For information about using FireWire to transfer files, see “FireWire Target Disk Mode” on page 27.
- If your computer has an AirPort Extreme Card, you can connect to an AirPort wireless network to transfer files. For more information, see “AirPort Extreme Wireless Internet and Networking” on page 28.

For more information about transferring files and documents, open Mac OS Help (see page 22) and search for “transferring files.”

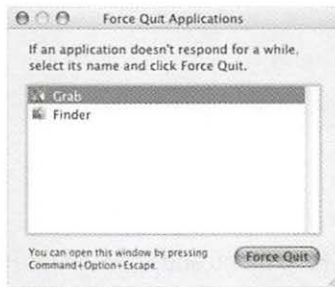
When an Application Freezes

On rare occasions, an application may freeze on the screen. Mac OS X provides a way to quit a frozen application without restarting your computer. Quitting a frozen application may allow you to save your work in other open applications.

To force an application to quit:

- 1 Press Command (⌘)-Option-Esc.

The Force Quit Applications dialog appears with the application selected.



- 2 Click Force Quit.

The application quits, leaving all other applications open.

If needed, you can force the Classic environment to quit, which closes all Classic applications. You can also restart the Finder from this dialog.

If you're experiencing other problems, see Chapter 5, “Troubleshooting,” on page 57.

Getting Answers to Your Questions Using Mac OS Help

You can find answers to most of your questions about using your computer and Mac OS X in Mac OS Help.



To use Mac OS Help:

- 1 Click the Finder icon in the Dock.
- 2 Choose Help > Mac Help (click the Help menu and choose Mac Help).
- 3 Type a question and press the Return key on your keyboard.
- 4 Double-click an item in the list of Help topics.

Using Applications

Your iMac G5 comes with software applications, including the iLife Suite of applications, for doing things like sending email, surfing the Internet, chatting online, organizing music and digital photos, making movies, and much more. For more information on these applications, see the *Welcome to Panther* booklet that came with your computer.

Your iMac G5 has many built-in features and expansion capabilities you can use to customize your computer to fit your needs.

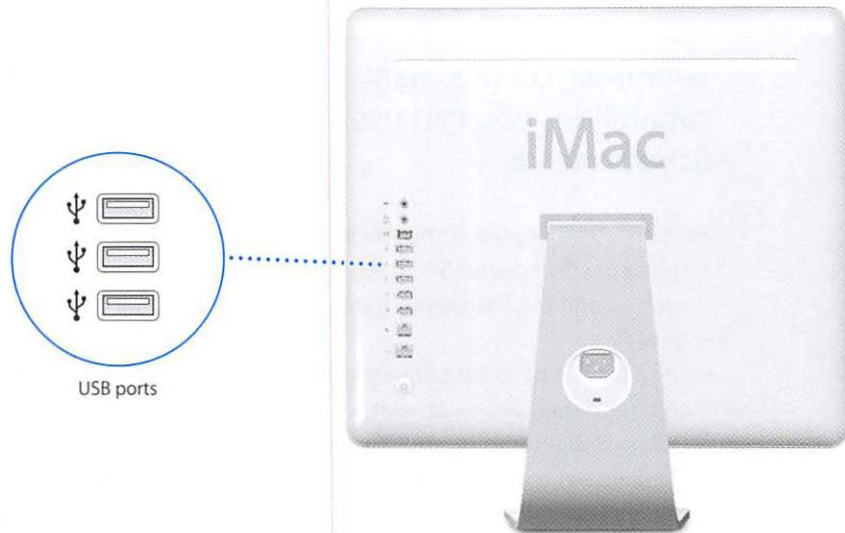
Here are some of your computer's features and capabilities:

- High-speed Universal Serial Bus (USB) 2.0 ports for connecting additional equipment, such as printers, scanners, joysticks, keyboards, digital cameras, and floppy disk drives.
- FireWire 400 ports for connecting high-speed equipment, such as an iPod, iSight camera, digital video cameras, and external hard disk drives.
- Optional Bluetooth module for connecting wirelessly to digital devices.
- The latest in communications technologies, such as a 56K v.92 modem (on some models), 10/100Base-T Ethernet, and optional AirPort Extreme wireless networking.
- Combination headphone out/optical audio out port to connect headphones or digital audio equipment.
- VGA output with the Apple VGA Display Adapter (available at www.apple.com/store) lets you use your iMac G5 with an external monitor or video projector.
Use your iMac G5's video out port and the Apple Video Adapter (available at www.apple.com/store) to present what's on your computer's screen on any television that supports composite or S-video.

To learn about what you can do with your iMac G5, start with the information in this chapter. Additional information can be found in Mac OS Help (see page 22) and on the Apple website.

Universal Serial Bus (USB)

Your iMac G5 comes with five USB ports (⌚) (three high-speed USB 2.0 ports on the back of the computer and two USB 1.1 ports on the keyboard), which you can use to connect many types of external devices, including printers, scanners, digital cameras, game pads, joysticks, keyboards, and floppy disk drives. USB makes it easy to connect peripherals. In most cases you can connect and disconnect a USB device while the computer is running. Once you connect the device, it is ready to use.



Using USB Devices

To use a USB device with your computer, simply connect the device to the computer. Your computer automatically accesses the necessary software whenever you connect a new device.

You can connect USB 1.1 devices and high-speed USB 2.0 devices to the USB 2.0 ports on the back of your computer. USB 1.1 devices won't take advantage of the USB 2.0 higher transfer rate.

Likewise, you can connect USB 2.0 devices to the USB 1.1 ports on your keyboard, but they may operate at slower speeds.

Note: Apple has already included software to work with many USB devices. When you connect a USB device, if your iMac G5 cannot find the correct software, you can install the software that came with the device or check the device manufacturer's website for the latest software.

Using Multiple USB Devices at the Same Time

If all of your USB ports are being used and you want to connect more USB devices, you can purchase a USB hub. The USB hub connects to an open USB port on your computer and provides additional USB ports (usually four or seven). Most USB hubs also have a power adapter and should be plugged into an outlet.



For More Information on USB

Additional information on USB is available in Mac OS Help (see page 22). Choose Help > Mac Help and search for “USB.” You can also find information on the Apple USB website at www.apple.com/usb.

For information on USB devices available for your computer, check the Macintosh Products Guide at www.apple.com/guide.

FireWire

Your computer has two FireWire 400 ports (⌘). FireWire lets you easily connect and disconnect external high-speed devices—such as an iPod, an iSight camera, digital video cameras, printers, scanners, and hard disks. You can connect and disconnect FireWire devices without restarting your computer.



These are some of the things you can do with FireWire:

- Connect an iPod and transfer thousands of songs from iTunes or synchronize contact and calendar information using iSync.
- Connect an Apple iSight camera and use the included iChat AV application to videoconference with friends and family over a high-speed Internet connection.
- Connect a digital video camera and capture, transfer, and edit high-quality video directly on your computer using video-editing software such as iMovie (included with your computer), Final Cut Express, or Final Cut Pro.
- Connect an external FireWire hard disk drive and use it to back up data or transfer files. A FireWire hard disk icon appears on your desktop after you connect the drive to your iMac G5.
- Start up from an external FireWire hard disk. Connect an external FireWire disk (with a valid operating system installed on it), open the Startup Disk pane of System Preferences, and click the FireWire disk. Restart your computer.

Using FireWire Devices

To use a FireWire device with your computer, simply connect the device to the computer. Apple has already included software to work with many FireWire devices. When you connect a FireWire device, if your iMac G5 cannot find the correct software, you can install the software that came with the device or check the device manufacturer's website for the latest software.

Note: The FireWire port is designed to provide power for FireWire devices (up to a total of 8 watts). You can connect multiple devices to each other and connect the "daisy-chain" of devices to the FireWire port on your computer. In most cases, at most two devices should get power from the computer. If you connect more than two devices, the rest of the devices in the daisy-chain should be powered by separate power adapters. Connecting more than two FireWire devices that get power from the computer may cause problems. If a problem occurs, shut down the computer, disconnect the FireWire devices, and restart your computer.

FireWire Target Disk Mode

If you want to transfer files between your iMac G5 and another FireWire-equipped computer, or you have a problem that prevents your computer from starting up, you can use FireWire Target Disk Mode to connect to another computer.

To connect your iMac G5 in FireWire Target Disk Mode, follow these steps:

- 1 Make sure that your iMac G5 is shut down.
- 2 Use a FireWire cable with a standard 6-pin connector on each end to connect your iMac G5 to another FireWire-equipped computer.
- 3 Start up your iMac G5 and immediately hold down the T key. Your iMac G5 display shows the FireWire logo. The other computer's display shows the iMac G5 internal hard disk icon and the icon of a CD or DVD disc in the iMac G5's optical drive.
- 4 When you are finished transferring files, drag the iMac G5 hard disk icon and the CD or DVD disc icon to the Trash.
- 5 Press the power button on the iMac G5 to shut it down, and then disconnect the FireWire cable.

For More Information on FireWire

Additional information on FireWire is available in Mac OS Help (see page 22). Choose Help > Mac Help and search for "FireWire." You can also find information on the Apple FireWire website at www.apple.com/firewire.

AirPort Extreme Wireless Internet and Networking

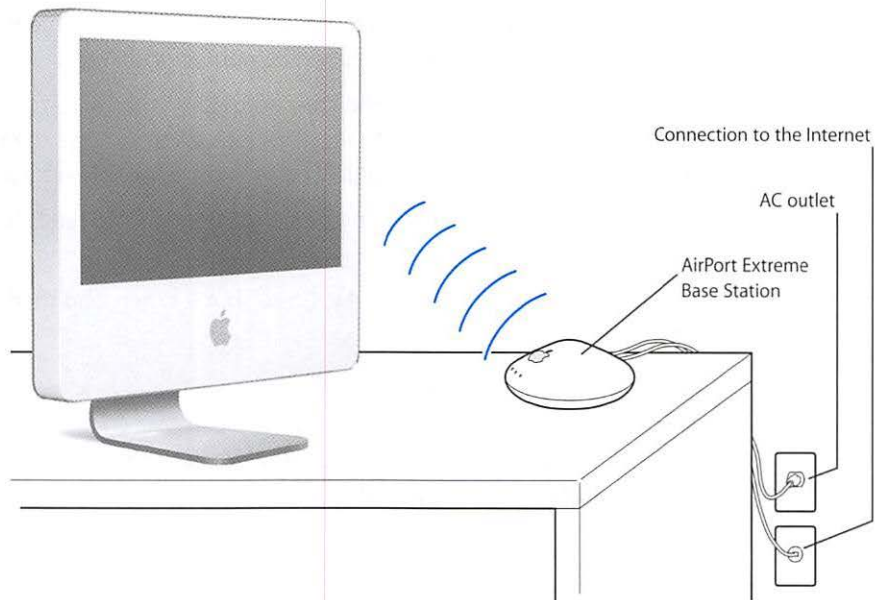
Your iMac G5 is AirPort Extreme-ready. If you ordered an AirPort Extreme Card when you purchased your iMac G5, the card is already installed. If you do not have an AirPort Extreme Card installed and would like to install one, see page 47 for more information.

AirPort offers an easy and affordable way to provide wireless Internet access anywhere in the home, at work, or in the classroom. Instead of using traditional cables, AirPort uses wireless local area network (LAN) technology to provide wireless communication between multiple computers. Through a wireless network, you can set up access to the Internet, transfer files, play multiplayer games, and more.

Note: Wireless Internet access requires an AirPort Extreme Card. Previous models of AirPort Card are not compatible with your computer. You also need an AirPort Base Station and Internet access (fees may apply). Some Internet service providers are not currently compatible with AirPort. Range may vary with site conditions.

How AirPort Provides Wireless Internet Access

With AirPort, you set up a wireless connection to a device known as a *base station*, which has a physical connection to the Internet. AirPort technology works like a cordless telephone. The AirPort Extreme Card in the computer makes a wireless connection to the base station, which is connected to the Internet via a telephone line or a DSL or cable modem.



For More Information on AirPort

To purchase an AirPort Base Station, contact your Apple-authorized dealer or go to the Apple Store at www.apple.com/store.

Additional information on AirPort is available in AirPort Help. Choose Help > Mac Help, then choose Library > AirPort Help. You can also find information on the Apple AirPort website at www.apple.com/airport and in the Apple Knowledge Base at kbase.info.apple.com.

Bluetooth Wireless Technology

If your iMac G5 has the optional Bluetooth module, you can connect to devices that use Bluetooth wireless technology, such as mobile phones, PDAs, printers, and the Apple Wireless Keyboard and Apple Wireless Mouse (available for purchase at www.apple.com/store).

With Bluetooth wireless technology, you can do the following:

- Use your iMac G5 to communicate with a mobile phone equipped with Bluetooth wireless technology. Your phone can act as a modem to connect you to a wireless service provider, at speeds of up to 56 kilobits per second (kbit/s), so you can use your mobile phone to access the Internet.
- Communicate with your handheld PDA. Using iSync, you can perform a hot sync operation without cables or send your business card or calendar events directly to a colleague's PDA.
- Transfer files between computers, even Mac to PC, using the transfer utility. Apple still recommends the use of AirPort Extreme wireless networking, however, for anything but the smallest files.
- Use a Bluetooth wireless keyboard or mouse.

To set up a Bluetooth device:

- Use the Bluetooth Setup Assistant, located in the Applications/Utilities folder on your hard disk.

You can also choose "Set up Bluetooth Device" from the Bluetooth status menu in the menu bar.

Setting Up Bluetooth File Exchange

You can control how your computer handles files that are exchanged between it and other Bluetooth devices. You can choose a folder for the files you accept from other devices, a folder for other devices to browse, and which applications to use to open the files you accept.

To set up a Bluetooth file exchange:

- Open System Preferences and click Bluetooth, then click File Exchange.

Setting Up Bluetooth Connections

Bluetooth enabled devices, such as computers, mobile phones, and handheld devices (PDAs), can connect to each other wirelessly at distances up to 10 meters (33 feet).

To set up a Bluetooth device to work with your computer:

- 1 Make sure you have a Bluetooth module installed in your computer or a USB Bluetooth module connected to your computer.
- 2 Open System Preferences and click Bluetooth.
- 3 Click Set Up New Device.
- 4 Choose the type of device you want to set up and follow the onscreen instructions.

Sending a File to a Bluetooth Enabled Device

Your computer can wirelessly send files to other Bluetooth devices in range of your computer. If your computer is not paired with the device, you may have to enter a password on both devices to pair.

If you have already paired with the device, you may not have to enter a password again.

To send a file to a Bluetooth enabled device:

- 1 Open the Bluetooth File Exchange application, located in Applications/Utilities.
- 2 Choose File > Send File, select the file you want to send, then click Send.
- 3 Choose a device from the Device list and click Send.

If the device is not in the Device list, click Search. When Bluetooth File Exchange finds the device, you can add it to your Favorites list.

Use the File Exchange pane of Bluetooth preferences to set options for how your computer handles files exchanged with other Bluetooth devices.

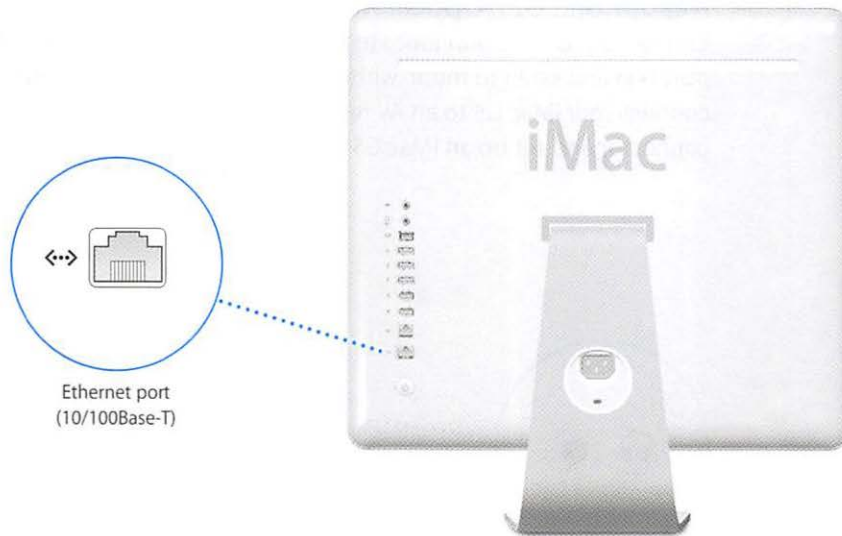
You can also send a file by choosing Send File from the Bluetooth status menu in the menu bar.

For More Information on Bluetooth Wireless Technology

You can get help using Bluetooth wireless technology by opening the Bluetooth File Exchange application (located in the Utilities folder within the Applications folder) and choosing Help > Bluetooth Help. You can also find information on the Apple website at www.apple.com/bluetooth.

Ethernet (10/100Base-T)

Your computer comes with built-in 10/100 megabit per second (Mbps) Base-T (twisted-pair) Ethernet networking capability, which you can use to connect to a network or to a cable or DSL modem.



Connecting to a network gives you access to other computers. You may be able to store and retrieve information; use network printers, modems, and electronic mail; or connect to the Internet. You can also share files between two computers or set up a small network. The Ethernet port on your iMac G5 automatically detects other Ethernet devices. You don't need a crossover cable to connect to other Ethernet devices.

- Use 4-pair category 3 (Cat 3) Ethernet cables to connect to a 10Base-T Ethernet network.
- Use 2-pair category 5 (Cat 5) Ethernet cables to connect to a 10Base-T or a 100Base-T Ethernet network.

For More Information on Using Ethernet

Additional information, including how to set up an Ethernet network and transfer files using Ethernet, is available in Mac OS Help (see page 22). Choose Help > Mac Help and search for "Ethernet" or "network." For information on networking products you can use with your iMac G5, check the Macintosh Products Guide at www.apple.com/guide.

Audio Support

Your iMac G5 comes with comprehensive audio capabilities, including a combination headphone out/optical audio out port to connect headphones or digital audio equipment and an analog audio line in port.

Headphone Out/Optical Audio Out Port

Connect a pair of headphones to the combination headphone out/optical audio out port (🎧) and listen to music without disturbing anyone around you. You can also connect your iMac G5 to an AV receiver using an optical audio cable with a mini-plug connector and set up an iMac G5-based home theater system.



Audio Line In Port

You can connect external powered microphones or other audio equipment to the analog audio in port (🎙️) on the back of the computer for importing audio.

Use the Sound pane of System Preferences to select the audio input or output device you want to use.



For More Information on Using Audio

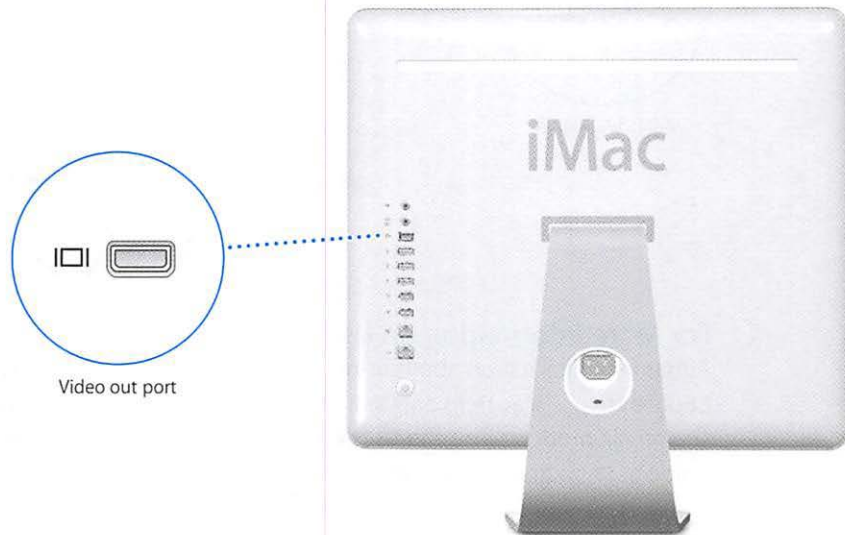
Additional information about using audio is available in Mac OS Help (see page 22). Choose Help > Mac Help and search for "audio" or "music." For information on audio and music products you can use with your iMac G5, check the Macintosh Products Guide at www.apple.com/guide.

External Video Support (VGA, Composite, and S-Video)

Your computer has a video out port you can use to connect an external display (monitor) or VGA projector, using the Apple VGA Display Adapter (available at www.apple.com/store).

You can also display or record computer images by connecting a TV, video projector, or videocassette recorder (VCR), using the Apple Video Adapter (available at www.apple.com/store).

Note: The Apple Video Adapter is not compatible with some previous iMac models.



When an external monitor or television is connected, the same image appears on both the iMac G5 display and the external monitor (known as *video mirroring*).

Note: Because of the display limitations of most televisions, images displayed on a television screen are of lower quality than those on the built-in display or an external monitor.

Connecting an External Display or Projector

To connect an external display or projector to your computer with a VGA connector:

- 1 Turn on the external display or projector.
- 2 Connect the Apple VGA Display Adapter to the VGA port on the external display or projector.
- 3 Connect the Apple VGA Display Adapter to your iMac G5. Your iMac G5 automatically detects the external display.

Important: To ensure that your iMac G5 automatically detects the external display or projector, be sure the VGA adapter is plugged into the external display or projector first.

- 4 Use the Displays pane of System Preferences to adjust the resolution on the external display or projector.

Connecting a Television, VCR, or Other Video Device

To connect a TV, VCR, or other video device to the iMac G5:

- 1 Connect the single-plug end of the Apple Video Adapter to the video out port on your iMac G5.
- 2 Connect the other end of the adapter to the composite video port or the S-video port on the TV or VCR.
- 3 Turn on the external device.
- 4 To adjust how the images are displayed on the device, use the Displays pane of System Preferences.

The image appears on both the iMac G5 and the TV, except for DVD playback, which appears only on the TV.

For More Information on Using an External Display or TV

Additional information on using and configuring an external monitor is available in Mac OS Help. Choose Help > Mac Help and search for “display.”

Using Your Optical Drive

You can install or use software from CDs and DVDs using your optical drive. You can play music from audio CDs and play DVD movies. You can also burn music CDs that can play in most CD players, and you can save documents and other digital files on CD-R and CD-RW discs.

If your iMac G5 has a SuperDrive, you can also use your home movies to make video DVDs that can be played in most home DVD players, or save documents to blank DVD-R (recordable DVD) discs.

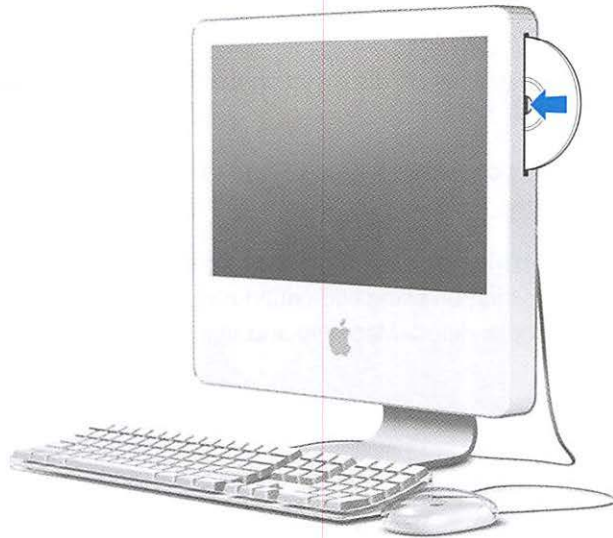
Note: If you have older software that comes on floppy disks, contact the software manufacturer to see if the software is available on a CD or for download from the web, or purchase an external USB floppy disk drive for your iMac G5 from your Apple dealer or the Apple Store (www.apple.com/store).

Inserting a CD or DVD Disc

To install or use programs from a CD or DVD disc, follow these steps:

- 1 Place the disc into the optical drive with the label facing you.
- 2 When the icon for the disc appears on the desktop, the disc is ready to use.

Note: Some DVD discs are two-sided.



Ejecting a Disc

To eject a disc, do one of the following:

- Drag the disc icon to the Trash.
- Press and hold the Media Eject (⏏) key on the keyboard until the disc ejects.

If you can't eject the disc, quit any applications that may be using the disc and try again. If that doesn't work, restart the computer while holding down the mouse button.

Playing DVD Discs

To play a DVD, insert the DVD disc. DVD Player opens automatically and starts playing the disc.

If your iMac G5 is connected to a TV so that you can watch DVD playback on the TV screen, select 720 x 480 NTSC (in the United States) or 720 x 576 PAL (in Europe and other regions) in the Displays pane of System Preferences.

You can easily connect your iMac G5 to your stereo system. Use an optical audio cable with a mini-plug connector (available www.apple.com/store) to connect the combination headphone out/optical audio out port (⏏) on your iMac G5 to the optical audio input port on your stereo receiver.

Recording CD-R and CD-RW Discs

You can record music on CD-R or CD-RW discs right from your iTunes library.

To record music to a CD-R or CD-RW disc using iTunes:

- 1 Click the iTunes icon in the Dock.
- 2 Select the playlist you want to record.
- 3 Insert a blank CD-R or CD-RW disc. (For highest compatibility with CD players, use a CD-R disc.)
- 4 At the top of the iTunes window, click Burn CD.

To record your files and folders on CD-R and CD-RW discs using the Finder:

- 1 Insert a blank disc in the optical drive.
- 2 In the dialog that appears, enter a name for the disc. An icon for the CD appears on the desktop.
- 3 Drag files and folders to the disc icon.
- 4 Choose File > Burn Disc, or select the disc and drag it to the Burn Disc icon in the Dock.

For More Information

- For information about how to use iTunes to record music files on a CD-R disc, open iTunes and choose Help > iTunes and Music Store Help.
- For instructions on using DVD Player, open DVD Player and choose Help > DVD Player Help.

Recording Information on a DVD

If your iMac G5 has a SuperDrive, you can record your own home movies on a blank DVD-R (DVD-Recordable) disc. You can also record other kinds of digital data (for example, you can back up your files to DVD-R discs).

With iDVD, you can create your own customized DVD, burn it on a blank DVD-R disc, and play it on most standard DVD players.

To burn an iDVD project to a blank DVD:

- 1 Open iDVD and open your completed DVD project.
- 2 Click the Burn button.
- 3 Insert a new blank DVD-R disc into the drive when prompted.
- 4 Click the Burn button again.

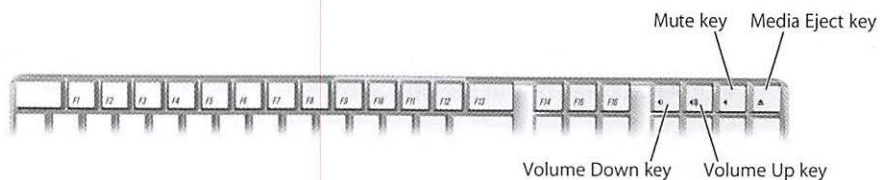
To record data to a DVD-R disc using the Finder:

- 1 Insert a blank DVD-R disc in the drive.
- 2 In the dialog that appears, enter a name for the disc and select the format you want to create. An icon for the DVD appears on the desktop.
- 3 Double-click the DVD icon, then drag files and folders to it.
- 4 Choose File > Burn Disc, or select the disc and drag it to the Burn Disc icon in the Dock.

For more information about how to use iDVD, open iDVD and choose Help > iDVD Help.

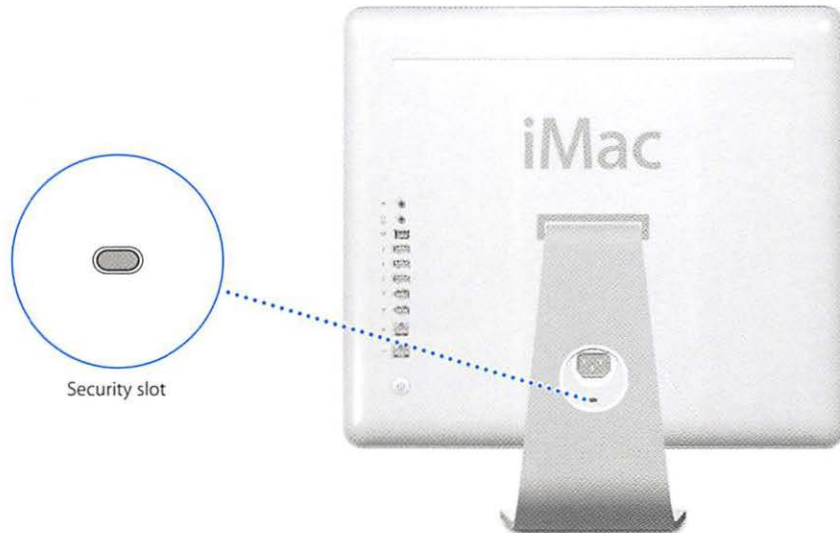
Keyboard Controls

You can quickly adjust the volume or eject a CD or DVD disc using the keyboard controls.



Securing Your Computer

Use a locking cable (available at www.apple.com/store) and the built-in security slot to attach your iMac G5 to a stationary object.



Additional information on the software security features of your iMac G5, including multiple user passwords and file encryption, is available in Mac OS Help (see page 22). Choose Help > Mac Help and search for "security" or "multiple users."

This chapter provides information and instructions for enhancing your computer.

Instructions are provided for the following procedures:

- “Installing Additional Memory” on page 41
- “Installing an AirPort Extreme Card” on page 47
- “Replacing the Internal Backup Battery” on page 51

Warning: If you attempt to install memory and damage your equipment, such damage is not covered by the limited warranty on your computer.

Installing Additional Memory

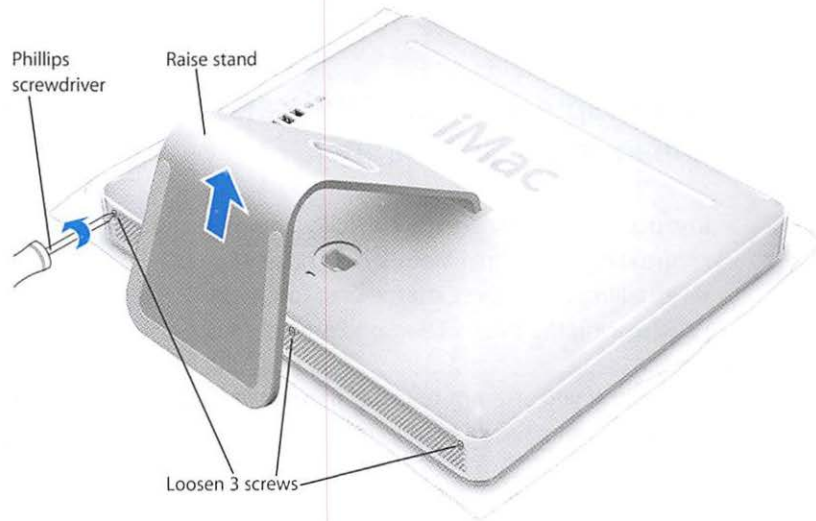
Your iMac G5 comes with at least 256 megabytes (MB) of Double Data Rate Synchronous Dynamic Random Access (DDR-SDRAM) memory. Your iMac G5 has two memory slots, one of which is usually available for expansion. Your iMac G5 is compatible with memory modules that meet the following specifications:

- PC-3200 compliant (also referred to as DDR-400)
- Double Data Rate Synchronous Dynamic Random Access Memory (DDR-SDRAM)
- 2.5 volt (V)
- Unbuffered and unregistered

The maximum amount of memory you can have in your iMac G5 is 2 gigabytes (GB), using two 1 GB memory modules in each slot. Use System Profiler to determine the amount of memory installed in your iMac G5. To access System Profiler, choose Apple () > About This Mac from the menu bar and then click More Info.

To install a memory module:

- 1 Turn your computer off by choosing Apple () > Shut Down. Disconnect all cables and the power cord from your computer.
- 2 Place a soft, clean towel or cloth on the desk or surface. Hold the sides of the computer and slowly lay it down so the screen is flat against the surface and the bottom is facing towards you.



- 3 Raise the stand and use a Phillips #1 screwdriver to loosen the three captive screws at the bottom of the computer by turning them counter-clockwise.

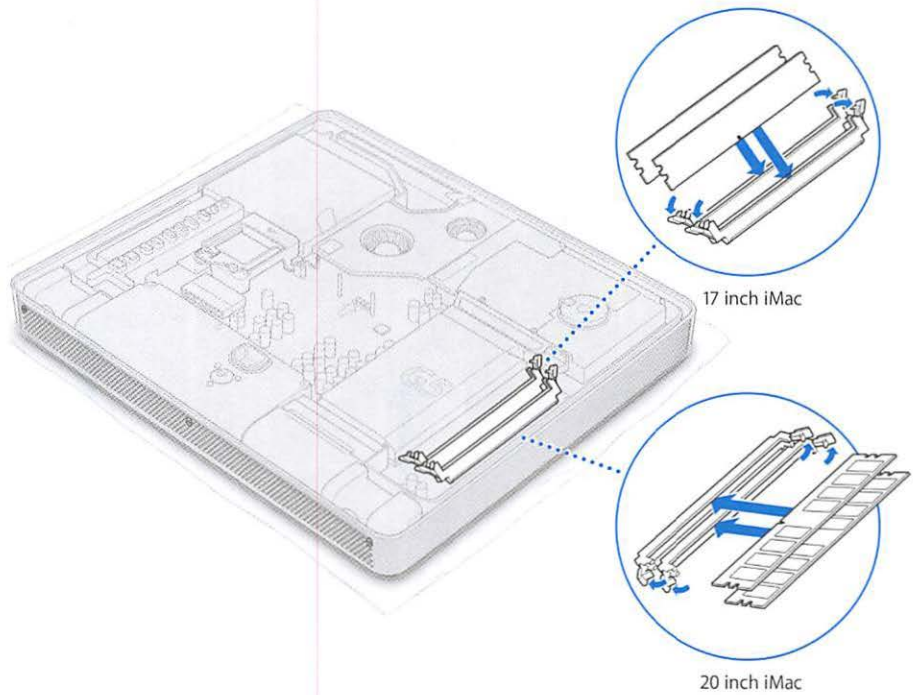
- 4 Holding the metal stand, tilt the back cover up and lift it away from the computer. The back cover with the stand attached should come off easily. If it doesn't, make sure the screws are turned completely counter-clockwise, taking care not to over torque the screws.



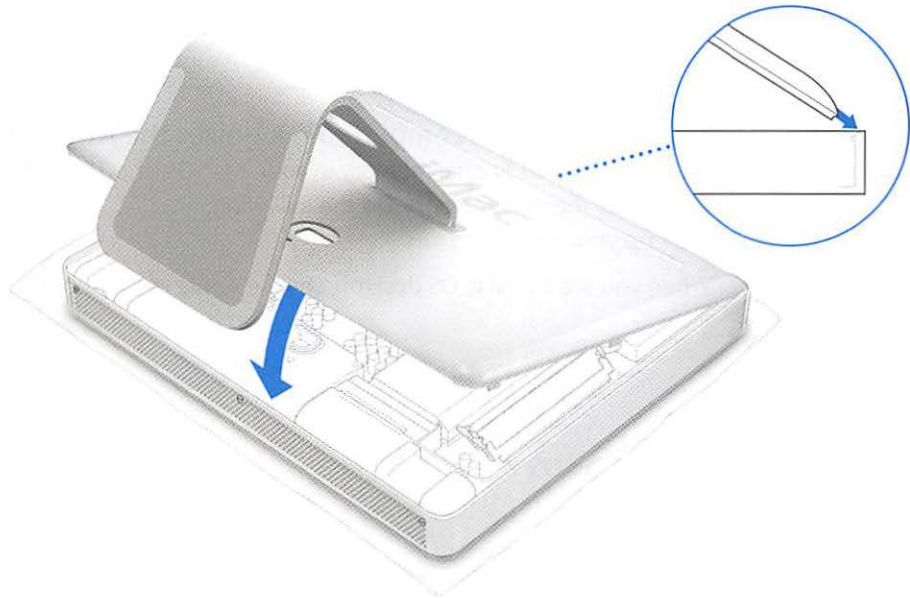
- 5 To protect the computer from electrostatic discharge, ground yourself by touching a metal surface inside the computer.

Warning: Always discharge static electricity before you touch any parts or install any components inside the computer. To avoid generating static electricity, do not walk around the room until you have finished installing the memory and closed the computer.

- 6 Insert the memory module into the memory slot at an angle and press it gently to lock it in place. The module fits into the slot only one way. Be sure to align the notches on the module with the small notches inside the slot.



- 7 Holding the back cover by the stand, tilt it slightly and align the tabs on the top edge of the back cover with the slots on the top edge of the computer. Rotate the back cover down and gently press until it fits snugly on the computer.



- 8 Turn the three captive screws clockwise to tighten them. Be careful not to over-tighten the screws, as you may strip the screw heads.



- 9 Holding each side of the computer, gently turn the computer right side up. Then reconnect the cables and power cord you disconnected from your computer.
- 10 Press the power button on the back of your computer to turn it on.

Warning: Operating the computer when it is open or missing parts can be dangerous and could damage your computer.

Making Sure Your Computer Recognizes the New Memory

After installing additional memory in your iMac G5, check whether the computer recognizes the new memory. Do the following:

- 1 Start up your computer.
- 2 When you see the Mac OS desktop, choose Apple () > About This Mac.



— Total memory installed
in your iMac G5

The total includes the amount of memory that originally came with the computer plus the new memory you added. For a more detailed breakdown of the amount of memory installed in your computer, open System Profiler by clicking More Info.

If your computer doesn't recognize the memory or it doesn't start up correctly, shut down your iMac G5 and check the instructions again to make sure that the memory you installed is compatible with this iMac G5 and that it is installed correctly. If you still have problems, remove the memory and consult the support information that came with the memory or contact the vendor who provided the memory.

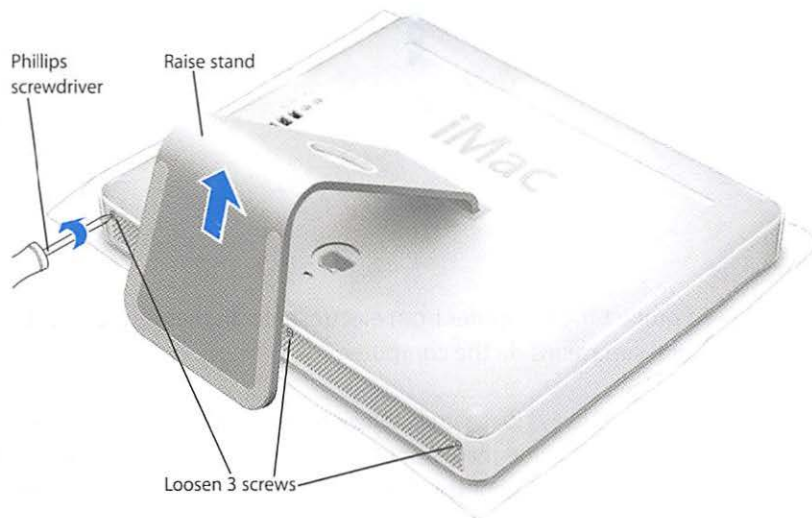
Installing an AirPort Extreme Card

If your computer did not come with an AirPort Extreme Card, you can purchase one from your Apple Authorized Reseller or from the Apple Store at www.apple.com/store and install it yourself or have it installed by an Apple Authorized Service Provider.

Note: Your iMac G5 is not compatible with older AirPort Cards. Use only an AirPort Extreme Card.

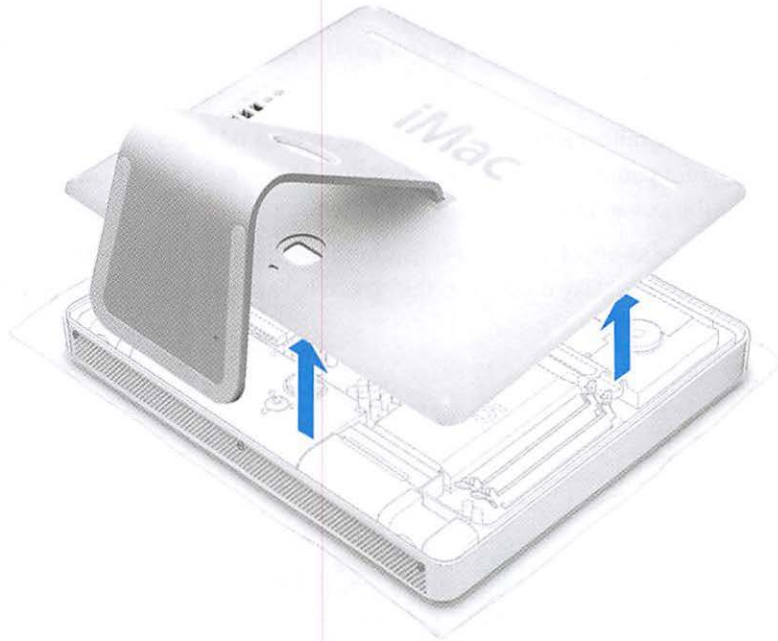
To install an AirPort Extreme Card in your iMac G5:

- 1 Turn your computer off by choosing Apple () > Shut Down. Disconnect all cables and the power cord from your computer.
- 2 Place a soft, clean towel or cloth on the desk or surface. Hold the sides of the computer and slowly lay it down so the screen is flat against the surface and the bottom is facing towards you.



- 3 Raise the stand and use a Phillips #1 screwdriver to loosen the three captive screws at the bottom of the computer by turning them counter-clockwise.

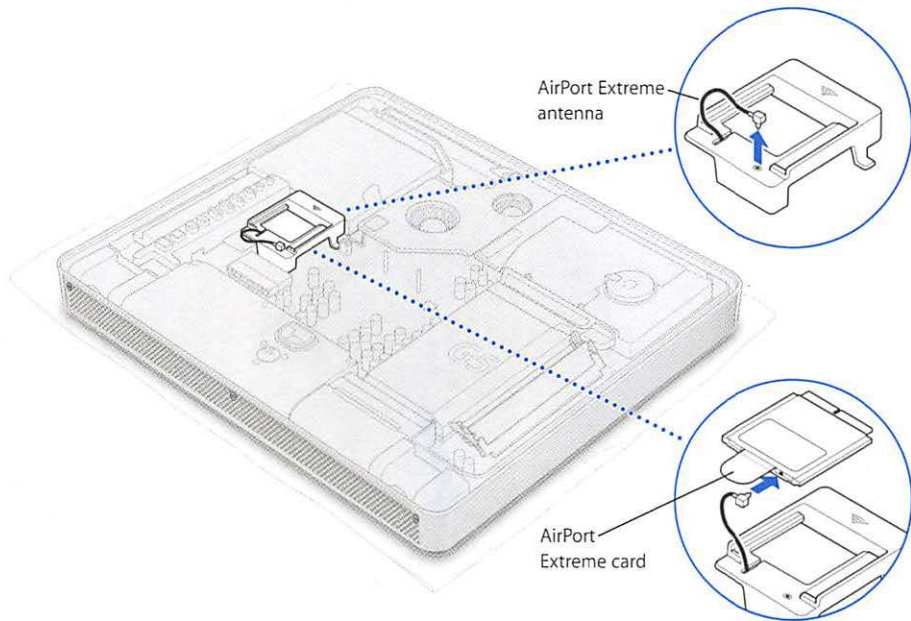
- 4 Holding the metal stand, tilt the back cover up and lift it away from the computer. The back cover with the stand attached should come off easily. If it doesn't, make sure the screws are turned completely counter-clockwise.



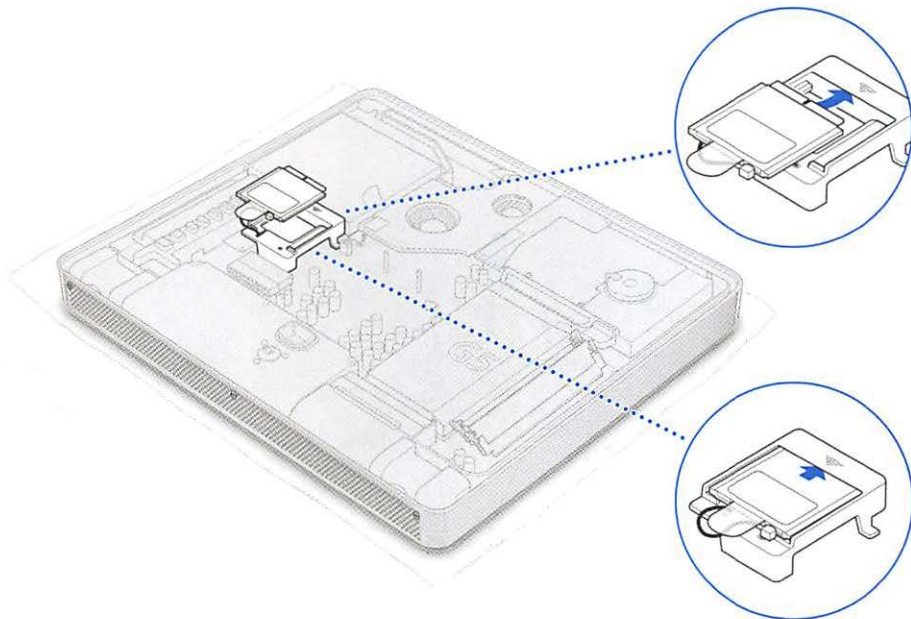
- 5 To protect the computer from electrostatic discharge, ground yourself by touching a metal surface inside the computer.

Warning: Always discharge static electricity before you touch any parts or install any components inside the computer. To avoid generating static electricity, do not walk around the room until you have finished the installation and closed the computer.

- 6 Connect the antenna to the AirPort Extreme Card.

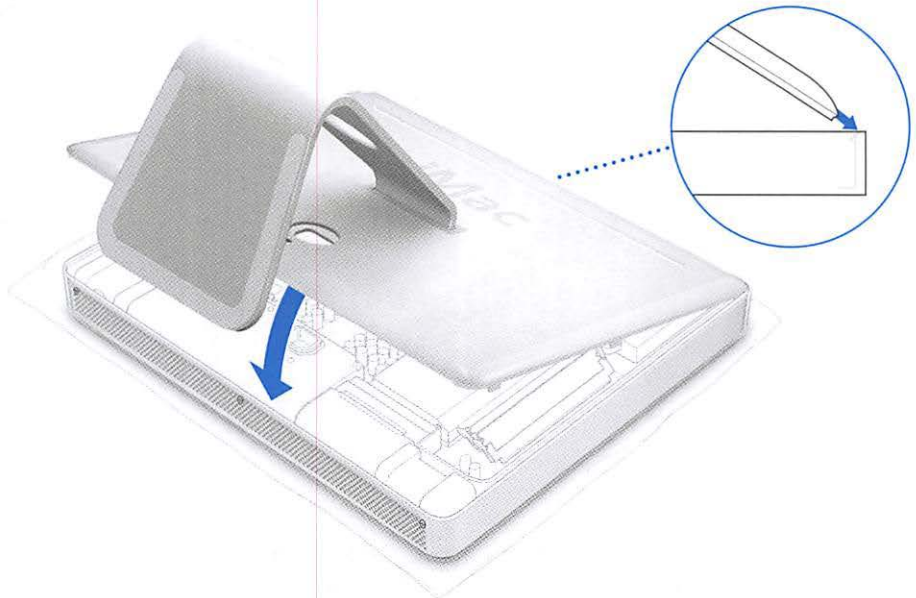


- 7 Position the AirPort Extreme Card with the serial number facing up. Align the edges of the card with the guides on the AirPort Extreme Card slot and insert the card into the slot until it snaps into place.

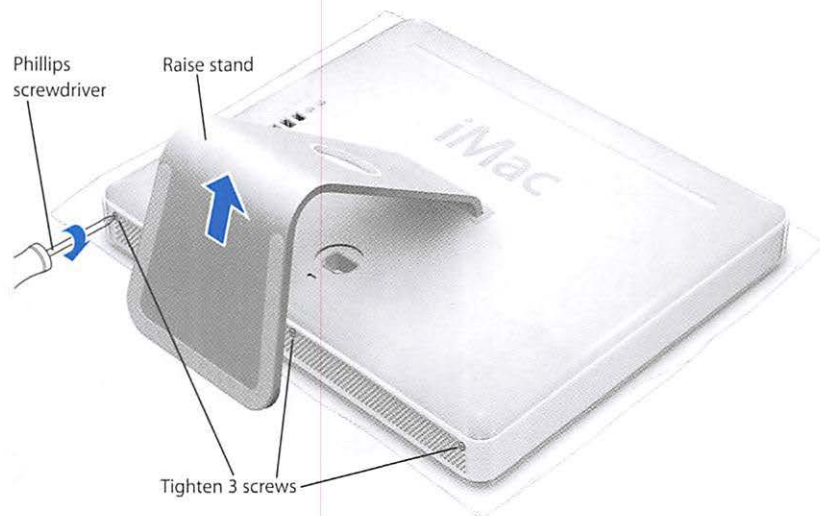


Important: Be sure to push the AirPort Extreme Card firmly all the way into the slot.

- 8 Holding the back cover by the stand, tilt it slightly and align the tabs on the top edge of the back cover with the slots on the top edge of the computer. Rotate the back cover down and gently press until it fits snugly on the computer.



- 9 Turn the three captive screws clockwise to tighten them. Be careful not to over-tighten the screws, as you may strip the screw heads.



- 10 Holding each side of the computer, gently turn the computer right side up. Then reconnect the cables and power cord you disconnected from your computer.
- 11 Press the power button on the back of your computer to turn it on.

Warning: Operating the computer when it is open or missing parts can be dangerous and could damage your computer.

If there is an AirPort network in range, you can select it using the AirPort status icon in the menu bar. If you want to set up an AirPort Base Station, use the AirPort Setup Assistant, in Applications/Utilities.

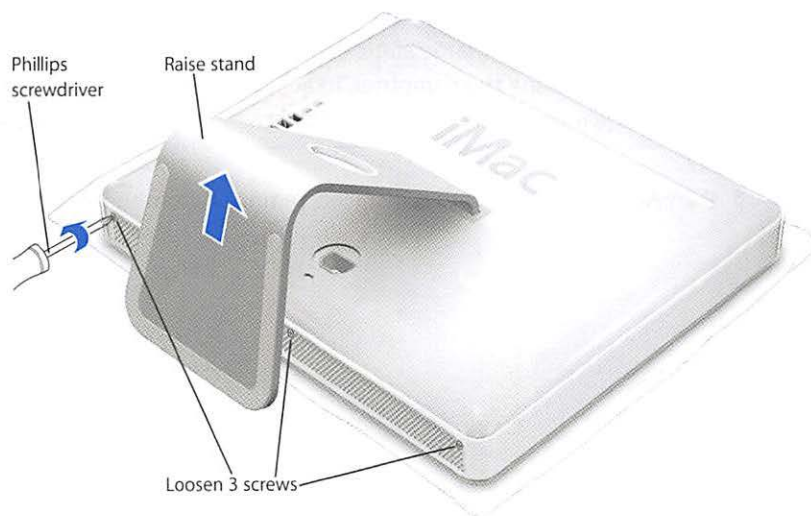
Replacing the Internal Backup Battery

Your iMac G5 has an internal backup battery that preserves certain settings, such as the date and time, when the computer is off. If you have problems starting up your computer or if settings change when you start up the computer, you may need to replace the internal backup battery.

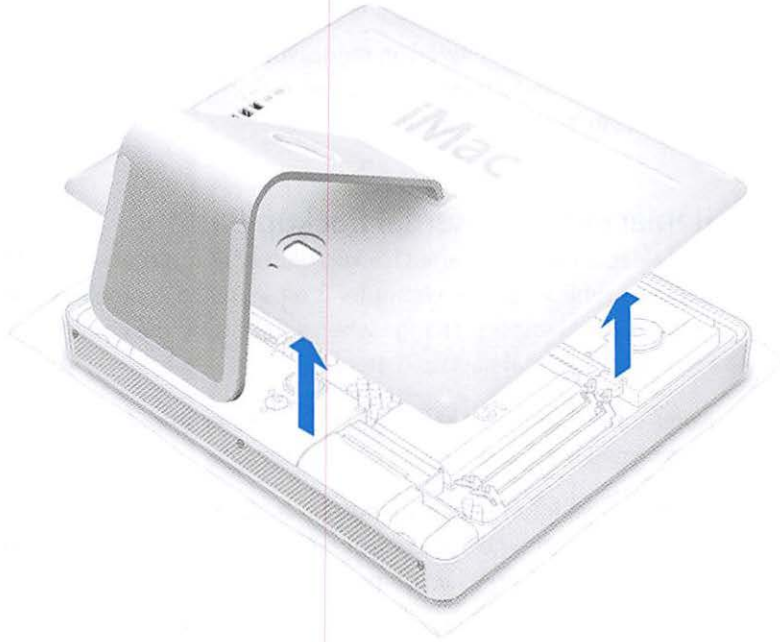
Note: If your computer is plugged into a power strip, Apple recommends you leave the strip turned on to avoid shortening battery life.

To replace an internal backup battery in your iMac G5:

- 1 Turn your computer off by choosing Apple () > Shut Down. Disconnect all cables and the power cord from your computer.
- 2 Place a soft, clean towel or cloth on the desk or surface. Hold the sides of the computer and slowly lay it down so the screen is flat against the surface and the bottom is facing towards you.



- 3 Raise the stand and use a Phillips #1 screwdriver to loosen the three captive screws at the bottom of the computer by turning them counter-clockwise.
- 4 Holding the metal stand, tilt the back cover up and lift it away from the computer. The back cover with the stand attached should come off easily. If it doesn't, make sure the screws are turned completely counter-clockwise.

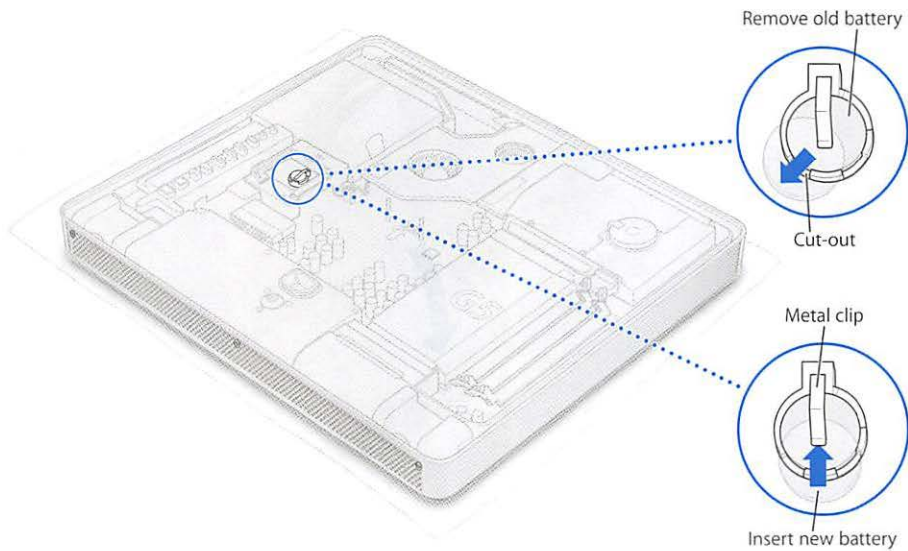


- 5 To protect the computer from electrostatic discharge, ground yourself by touching a metal surface inside the computer.

Warning: Always discharge static electricity before you touch any parts or install any components inside the computer. To avoid generating static electricity, do not walk around the room until you have finished the installation and closed the computer.

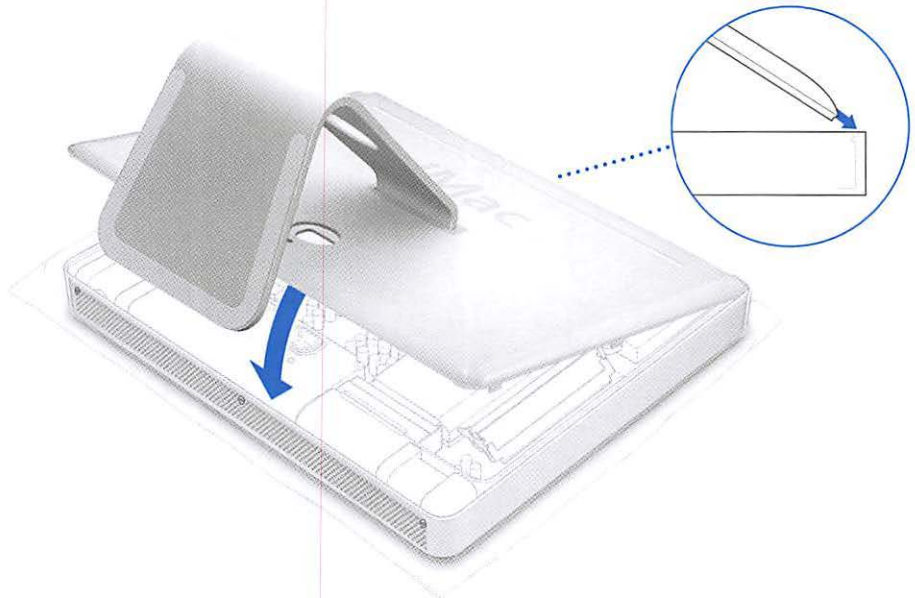
- 6 If an AirPort Extreme Card is installed, remove it from the slot over the battery.

- 7 To remove the old battery, place a fingernail in the cutout, lift the battery, and slide it out from the metal clip.
- 8 Locate the positive (+) side of the new battery. Slide the battery under the metal clip so the positive side touches the metal clip.



- 9 Replace the AirPort Extreme Card following the instructions on page 47.

- 10 Holding the back cover by the stand, tilt it slightly and align the tabs on the top edge of the back cover with the slots on the top edge of the computer. Rotate the back cover down and gently press until it fits snugly on the computer.



- 11 Turn the three captive screws clockwise to tighten them. Be careful not to over-tighten the screws, as you may strip the screw heads.



- 12 Holding each side of the computer, gently turn the computer right side up. Then reconnect the cables and power cord you disconnected from your computer.
- 13 Press the power button on the back of your computer to turn it on.

Warning: Operating the computer when it is open or missing parts can be dangerous and could damage your computer.

Note: Replacing the battery may cause some settings on your computer, such as date and time, to revert to the factory default settings. You may also have to restore modem settings in any communications programs you use.

Dispose of the old battery following the instructions in "Disposal and Recycling Information" on page 89.

Occasionally you may have problems while working with your iMac G5. This chapter gives you some solutions to try when you have a problem.

This chapter contains solutions to problems that prevent you from working with your computer, such as a system freeze or a computer that will not start up. You can find more troubleshooting information in Mac OS Help (see page 22), on the Apple Support website at www.apple.com/support, and in the Apple Knowledge Base at kbase.info.apple.com.

When you experience a problem with your computer, there is usually a simple and quick solution. When you encounter a problem, try to make a note of things you did before the problem occurred. This will help you narrow down the possible causes of the problem and then find the answers you need. Things to note include:

- The applications you were using when the problem occurred. Problems that occur only with a specific application may indicate that the application is not compatible with the version of the Mac OS installed on your computer.
- Any software that you recently installed. Certain applications install extensions that may not be compatible with the Classic environment.
- Any new hardware (such as additional memory or a peripheral) that you connected or installed.

Problems That Prevent You From Using Your Computer

If the computer won't respond or the pointer won't move

- First, make sure the mouse and keyboard are connected. Unplug and then plug in the connectors and make sure they are secure.
- If that doesn't work, try to force problem applications to quit. Hold down the Option and Command (⌘) keys and then press the Esc key. If a dialog appears, select the application and click Force Quit. Then save your work in any open applications and restart the computer to be sure the problem is entirely cleared up.
- If you are unable to force the application to quit, press and hold the power button (⏻) on the back of the computer for a few seconds to shut down the computer.

- If that doesn't work, unplug the power cord from the computer. Then plug the power cord back in and press the power button (⏻) on the computer to turn it on.

If the problem occurs frequently when you use a particular application, check with the application's manufacturer to see if it is compatible with your computer.

For support and contact information about the software that came with your computer, go to www.apple.com/guide.

If the problem occurs frequently, you may need to reinstall your system software (see "Reinstalling the Software That Came With Your Computer" on page 59).

If the computer freezes during startup or you see a flashing question mark

- Wait a few seconds. If the computer doesn't start up after a delay, shut down your computer by pressing and holding the power button (⏻) for about 5 seconds, until the computer shuts down. Then hold down the Option key and press the power button (⏻) again to start up your computer. When your computer starts up, click the hard disk icon, then click the right arrow.
- After the computer starts up, open System Preferences and click Startup Disk. Select a local Mac OS X System folder.
- If the problem occurs frequently, you may need to reinstall your system software (see "Reinstalling the Software That Came With Your Computer" on page 59).

If the computer won't turn on or start up

- Make sure the power cord is plugged into the computer and into a functioning power outlet.
- If that does not work, press the power button (⏻) and immediately hold down the Command (⌘), Option, P, and R keys until you hear the startup sound a second time.
- If you recently installed additional memory, make sure that it is correctly installed and that it is compatible with your computer. See whether removing it allows the computer to start up (see page 41).
- If that does not work, unplug the power cord and wait at least 30 seconds. Plug the power cord back in and press the power button (⏻) again to start up your computer.
- If you are still unable to start up your computer, see the service and support information that came with your iMac G5 for information on contacting Apple for service.

Reinstalling the Software That Came With Your Computer

Use the software install discs that came with your computer to reinstall Mac OS X and the applications that came with your computer, and to install Mac OS 9.

Important: Apple recommends that you back up the data on your hard disk before restoring software. Apple is not responsible for any lost data.

Installing Mac OS X and Applications

To install Mac OS X and the applications that came with your computer, follow these steps:

- 1 Back up your essential files, if possible.
- 2 Insert the Mac OS X install disc 1 that came with your computer.
- 3 Double-click “Install Mac OS X and Bundled Software.”
- 4 Follow the onscreen instructions.
- 5 After selecting the destination disk for installation, continue following the onscreen instructions. Your computer may restart and ask you to insert the Mac OS X install disc 2.

Note: If you want to restore Mac OS X on your computer to the original factory settings, click Options in the “Select a Destination” pane of the Installer, and then select “Erase and Install”.

Important: Because the “Erase and Install” option erases your destination disk, you should back up your essential files before installing Mac OS X and other applications.

Installing Applications

To install just the applications that came with your computer, follow the steps below. Your computer must have Mac OS X already installed.

- 1 Back up your essential files, if possible.
- 2 Insert the Mac OS X install disc 1 that came with your computer.
- 3 Double-click “Install Bundled Software Only.”
- 4 Follow the onscreen instructions.
- 5 After selecting the destination disk for installation, continue following the onscreen instructions. Your computer may restart and ask you to insert the Mac OS X install disc 2.

Note: To install iCal, iChat AV, iMovie, iPhoto, iSync, iTunes, and Safari, follow the “Installing Mac OS X and Applications” instructions above.

Installing Mac OS 9

Your iMac G5 does not come with Mac OS 9 installed. To use Mac OS 9 applications with your computer, you have to install Mac OS 9 using the “Additional Software & Apple Hardware Test” disc.

Follow these steps to install Mac OS 9:

- 1 Back up your essential files, if possible.
- 2 Insert the “Additional Software & Apple Hardware Test” disc that came with your computer.
- 3 Double-click “Install Extra Software.”
- 4 Follow the onscreen instructions.
- 5 After selecting the destination disk for installation, continue following the onscreen instructions.

Other Problems

If you have a problem with an application

- For problems with software from a manufacturer other than Apple, contact the manufacturer. Software manufacturers often provide updates to their software on their websites. You can set your iMac G5 to check for and install the latest Apple software automatically using the Software Update pane of System Preferences. For more information, choose Help > Mac Help and search for “software update.”

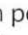
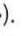
If you have trouble using AirPort wireless communication

- Make sure you have properly configured the software according to the instructions that came with your AirPort Extreme Card or AirPort Base Station.
- Make sure the computer or network you are trying to connect to is running and has a wireless access point.
- Make sure you are within antenna range of the other computer or the network’s access point. Nearby electronic devices or metal structures can interfere with wireless communication and reduce this range. Repositioning or rotating the computer may improve reception.
- Check the AirPort signal level. There are up to four bars in the AirPort status icon in the menu bar.
- You may experience network performance problems if a microwave oven, cordless phone, or other source of interference is used frequently near your base station. To minimize interference, move the base station away from the device.
- For more information on using and troubleshooting AirPort, choose Help > Mac Help, then choose Library > AirPort Help.

If you have trouble ejecting a disc

- Quit any applications that may be using the disc and press the Media Eject key (⏏) on your keyboard.
- If that doesn't work, open a Finder window and click the eject icon next to the disc icon in the Sidebar, or drag the disc's icon from the desktop to the Trash.
- If that doesn't work, restart the computer while holding down the mouse button.

If you have problems with your Internet connection

- Make sure your telephone line or network cable is connected and functioning properly.
- If you are using a dial-up Internet connection, make sure that your telephone cord is plugged into the modem port (marked with the icon ) and not the Ethernet port (marked with the icon ).
- See "Connecting to the Internet" on page 69 for information on setting up your computer to connect to the Internet. There you will find how to locate your Internet settings and the contact information for your Internet service provider (if you used the Setup Assistant to get your Internet account).
- See "Troubleshooting Your Connection" on page 85 for more information if you have problems with your Internet connection.

If you have a problem using your computer or working with the Mac OS

- If the answers to your questions are not in this manual, look in Mac OS Help for instructions and troubleshooting information. In the Finder, choose Help > Mac Help.
- Check the Apple Support website at www.apple.com/support for the latest troubleshooting information and software updates.

If your date and time settings get lost repeatedly

- You may need to have the internal backup battery replaced. See "Replacing the Internal Backup Battery" on page 51 for more information.

Locating Your Product Serial Number

You can find the serial number for your iMac G5 on the bottom of the stand. You can also use System Profiler to find the serial number. Choose Apple () > About This Mac from the menu bar and then click More Info. Click the Hardware triangle to view the serial number.

Using Apple Hardware Test

You can use Apple Hardware Test to help determine if there is a problem with your computer's hardware.

To use Apple Hardware Test:

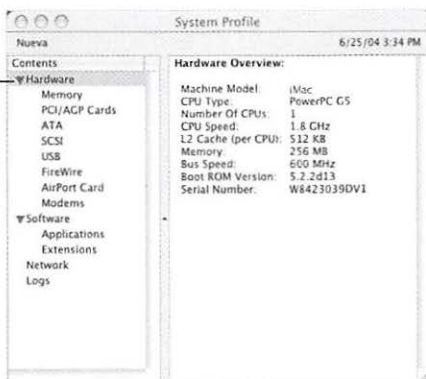
- 1 Disconnect all external devices from your computer except the keyboard and mouse. If you have an Ethernet cable connected, disconnect it.
- 2 Insert the "Additional Software & Apple Hardware Test" disc that came with your computer.
- 3 Restart your computer and hold down the "C" key as it starts up. A list of available startup volumes appears. Click Apple Hardware Test and click the right arrow.
- 4 When the Apple Hardware Test main screen appears after about 45 seconds, follow the onscreen instructions.
- 5 If Apple Hardware Test detects a problem, it displays an error code. Make a note of the error code before pursuing support options. If Apple Hardware Test does not detect a hardware failure, the problem may be software related.

For more information about Apple Hardware Test, see the Apple Hardware Test Read Me file on the "Additional Software & Apple Hardware Test" disc.

You can use System Profiler to find out detailed information about your iMac G5, such as the amount of built-in memory, hard disk size, devices connected, and the product serial number.

To access the information in System Profiler, choose Apple () > About This Mac from the menu bar and then click More Info.

Click the triangles in the window to show and hide information in the different categories.



Additional information is available on the Internet at www.apple.com/iMac and www.apple.com/support.

For your safety and that of your equipment, follow the rules in this appendix for cleaning and handling your computer, as well as the guidelines for working more comfortably.

Cleaning Your iMac G5

Follow these general rules when cleaning the outside of your computer and its components:

- Shut down your iMac G5 and disconnect all cables.
- Use a damp, soft, lint-free cloth to clean the computer's exterior. Avoid getting moisture in any openings. Do not spray liquid directly on the computer.
- Don't use aerosol sprays, solvents, or abrasives.

Cleaning Your iMac G5 Display

To clean your iMac G5 screen, do the following:

- Shut down your iMac G5 and disconnect all cables.
- Dampen a clean, soft, lint-free cloth or paper with water only and wipe the screen. Do not spray liquid directly on the screen.

Carrying Your iMac G5

Before you lift or reposition your computer, you may need to disconnect all cables and cords connected to it.

To lift or move your computer, hold the sides of the computer.

Safety Instructions for Setting Up and Using Your Computer

For your own safety and that of your equipment, always take the following precautions.

Disconnect the power plug (by pulling the plug, not the cord) and disconnect the phone cord if any of the following conditions exists:

- You want to remove any parts
- The power cord or plug becomes frayed or otherwise damaged
- You spill something into the case
- Your computer is exposed to rain or any other excess moisture
- Your computer has been dropped or the case has been otherwise damaged
- You suspect that your computer needs service or repair
- You want to clean the case (use only the recommended procedure described earlier)

Important: The only way to turn off power completely is to disconnect the power cord and phone cords. Make sure at least one end of the power cord is within easy reach so that you can unplug the computer when you need to.

Warning: Your AC cord came equipped with a three-wire grounding plug (a plug that has a third grounding pin). This plug will fit only a grounded AC outlet. If you are unable to insert the plug into an outlet because the outlet is not grounded, contact a licensed electrician to replace the outlet with a properly grounded outlet. Do not defeat the purpose of the grounding plug.

Be sure that you always do the following:

- Keep your computer away from sources of liquids, such as drinks, washbasins, bathtubs, shower stalls, and so on.
- Protect your computer from dampness or wet weather, such as rain, snow, and so on.
- Read all the installation instructions carefully before you plug your computer into a wall socket.
- Keep these instructions handy for reference by you and others.
- Follow all instructions and warnings dealing with your system.

Important: Electrical equipment may be hazardous if misused. Operation of this product, or similar products, must always be supervised by an adult. Do not allow children access to the interior of any electrical product and do not permit them to handle any cables.

Warning: Never push objects of any kind into this product through the openings in the case. Doing so may be dangerous and result in fire or a dangerous electric shock.

Connectors and Ports

Never force a connector into a port. If the connector and port don't join with reasonable ease, they probably don't match. Make sure that the connector matches the port and that you have positioned the connector correctly in relation to the port.

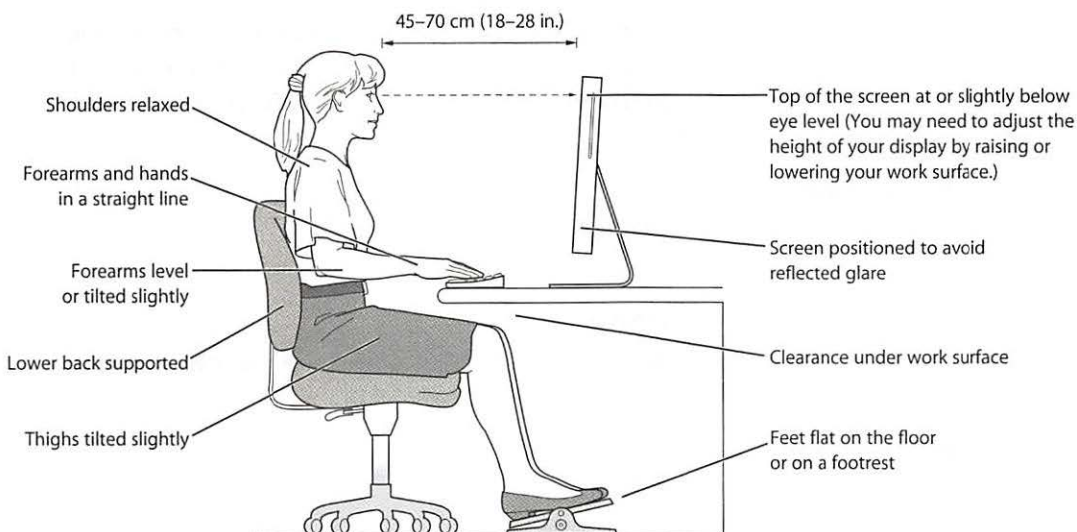
Avoid Hearing Damage

Warning: Permanent hearing loss may occur if earbuds or headphones are used at high volume. You can adapt over time to a higher volume of sound, which may sound normal but can be damaging to your hearing. Set your iMac G5 volume to a safe level before that happens. If you experience ringing in your ears, reduce the volume or discontinue use of earbuds or headphones with your iMac G5.

Ergonomics

Chair

An adjustable chair that provides firm, comfortable support is best. Adjust the height of the chair so your thighs are horizontal and your feet flat on the floor. The back of the chair should support your lower back (lumbar region). Follow the manufacturer's instructions for adjusting the backrest to fit your body properly.



You may have to raise your chair so your forearms and hands are at the proper angle to the keyboard. If this makes it impossible to rest your feet flat on the floor, you can use a footrest with adjustable height and tilt to make up for any gap between the floor and your feet. Or you may lower the desktop to eliminate the need for a footrest. Another option is to use a desk with a keyboard tray that's lower than the regular work surface.

Display

Arrange the display so the top of the screen is slightly below your eye level when you're sitting at the keyboard. The best distance from your eyes to the screen is up to you, although most people seem to prefer 18 to 28 inches (45 to 70 cm).

Position the display to minimize glare and reflections on the screen from overhead lights and windows.

Mouse

Position the mouse at the same height as your keyboard and within a comfortable reach.

Keyboard

When you use the keyboard, your shoulders should be relaxed. Your upper arm and forearm should form an angle that is slightly greater than a right angle, with your wrist and hand in roughly a straight line.

Use a light touch when typing and keep your hands and fingers relaxed. Avoid rolling your thumbs under your palms.

Change hand positions often to avoid fatigue. Some computer users may develop discomfort in their hands, wrists, or arms after intensive work without breaks. If you begin to develop chronic pain or discomfort in your hands, wrists, or arms, consult a qualified health specialist.

For More Information

Go to www.apple.com/about/ergonomics.

Apple and the Environment

Apple Computer, Inc., recognizes its responsibility to minimize the environmental impacts of its operations and products.

For More Information

Go to www.apple.com/environment/summary.html.

You can use your computer to browse the World Wide Web, send email to friends and family, and chat in real time over the Internet. Use this detailed guide to connect to the Internet.

When you first start up Mac OS X, the Setup Assistant helps you enter your Internet configuration information and sign up for an Internet service provider (ISP) if you don't already have one.

If you didn't use the Setup Assistant to configure your Internet connection, you can use it now. Open System Preferences and click Network. Click the "Assist me" button to open Network Setup Assistant. If you don't want to use Network Setup Assistant, you can use the information in this appendix to set up your connection manually.

There are four kinds of Internet connections:

- **Dial-up connection:** Your computer is plugged into a telephone wall jack using a telephone cable (with computers that include a modem).
- **High-speed DSL or cable modem connection:** Your computer is plugged into a special modem you get from an ISP using an Ethernet cable.
- **AirPort Extreme wireless connection:** Your computer is connected wirelessly to the Internet using an AirPort Extreme Base Station.
- **Local area network (LAN):** Your computer is plugged into a LAN using an Ethernet cable. This type of connection is usually used in the workplace.

Before you connect to the Internet:

- 1 Set up an account with an ISP. If you do not have an ISP account, the Setup Assistant can help you get one. If you don't want to use the ISP suggested by the Setup Assistant, you can find an ISP in your phone directory. Look under "Internet access," "Internet service," or "online."

Note: If you want to use America Online as your ISP, skip the Internet setup part of the Setup Assistant. You need the AOL installer application. Open the AOL Installer application and follow the onscreen instructions to set up AOL.

- 2 Gather the connection information you need from your ISP or network administrator. See the next section, "Setup Assistant Worksheet" on page 71 to find out what information to get for each type of connection.

In some cases, if another computer in the same location is already connected to the Internet, you may be able to use its settings.

To find the settings on a Mac OS X computer:

- Open the Network pane of System Preferences.
- Choose your connection method from the Show pop-up menu.
- Copy the information for your configuration.

To find the settings on a Mac OS 9 computer:

- Open the TCP/IP control panel.
- Find the connection method in the "Connect via" pop-up menu.
- Find the configuration in the Configure pop-up menu.
- Copy the IP address, subnet mask, and router address from the corresponding fields.

To find the settings on a Windows PC:

The connection information on a Windows computer resides in two places.

- To find the IP address and subnet mask, open the "Network and Internet Connections" control panel.
- To find user account information, open the User Accounts control panel.

You can write the information directly on the next few pages, then enter it in the Setup Assistant.

- 3 If you are using a dial-up modem, plug a phone cord (included with most Macintosh computers) into your computer's modem port and into a phone wall jack. If you are using a DSL or cable modem, follow the instructions that came with the modem to connect it to your computer.
- 4 Turn on your computer and enter information in the Setup Assistant to configure your Internet connection.

Note: If you already started your computer and did not use the Setup Assistant to configure your Internet connection, choose Apple (🍏) > System Preferences and click Network. Then click "Assist me." The Setup Assistant opens.

Setup Assistant Worksheet

You can write the information you get from your Internet service provider (ISP), your network administrator, or your other computer on these pages, then enter it in Network Setup Assistant.

Select how your computer connects to the Internet.

- ☐ Telephone Modem
- ☐ Cable Modem
- ☐ DSL Modem
- ☐ Local network (Ethernet)

To set up a telephone dial-up connection, enter the following information:

User Name

Password

ISP Phone Number

Dialing prefix to obtain an outside line

To set up a DSL or cable modem or a LAN connection:

- 1 Choose your connection type. Ask your ISP for this information.

- ☐ Manually
- ☐ Manually using DHCP Router
- ☐ Using DHCP
- ☐ Using BootP
- ☐ PPP

2 Enter information from your ISP:

If you selected "Manually" or "Manually using DHCP Router,"* enter the following:

IP Address

Subnet Mask

Router Address

* If you selected "Manually using DHCP Router," you don't need to enter a subnet mask or router address.

If you selected "Using DHCP," enter the following:

DHCP Client ID

Note: DHCP Client ID is optional and may not be required. Ask your ISP.

If you selected "PPP (for PPPoE connections)," enter the following:

Service Provider (optional)

PPPoE Service Name (optional)

Account Name

Password

The information below is optional. Ask your ISP if you need to enter it.

DNS Hosts (optional for DHCP & BootP)

Domain Name (optional)

Proxy Server (optional)

Setting Up Your Internet Connection Manually

Once you have completed the steps on the previous pages using the Setup Assistant, you are done setting up your Internet connection. If you don't wish to use the Setup Assistant, or if you only want to make changes to specific parts of your Internet setup configuration, you can use the instructions below to set up your connection manually.

To enter your information manually, follow the steps that correspond to your connection method.

- Dial-up modem with Point-to-Point Protocol (PPP) connection (see page 74)
- Cable modem, DSL, or LAN connection using these configurations:
 - Manual (see page 78)
 - DHCP (see page 79)
 - PPPoE (see page 80)
- AirPort Extreme wireless connection (see page 82)

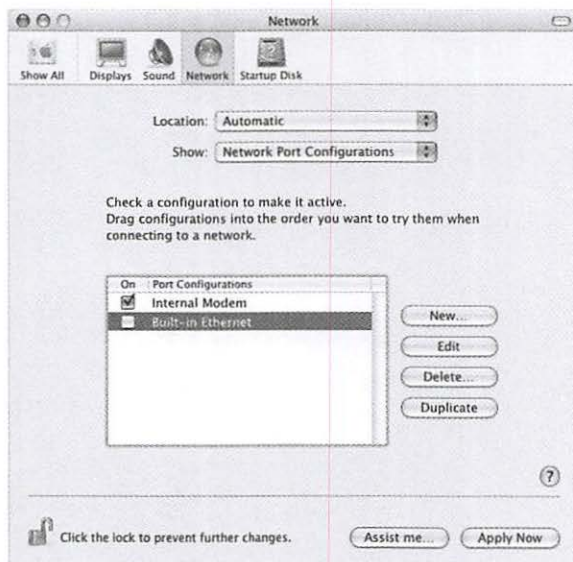
Dial-Up Connection

A dial-up modem is the most common way to connect to the Internet. Your modem uses a method called Point-to-Point Protocol (PPP) to connect to an ISP.

Make sure your modem is plugged into a phone line and you have the information from your ISP available (see page 71).

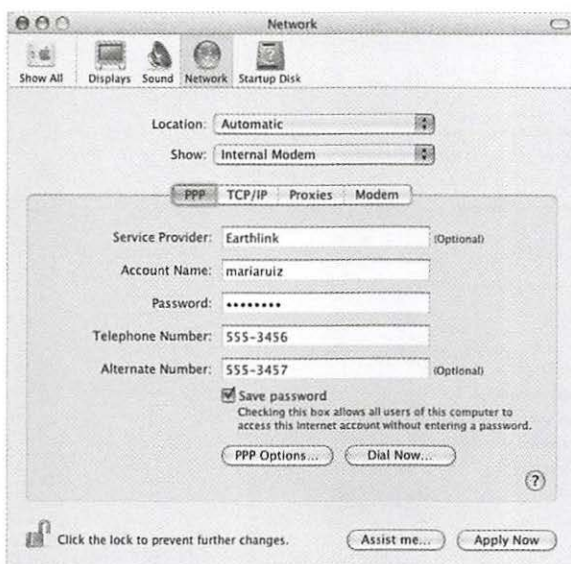
To set up Network preferences for the internal modem port:

- 1 Choose Apple () > System Preferences from the menu bar.
- 2 Click Network.
- 3 Choose Network Port Configurations from the Show pop-up menu and select the On checkbox next to Internal Modem.



- 4 Drag Internal Modem to the top of the Port Configurations list to make it the preferred, or primary, network interface.

- 5 Choose Internal Modem from the Show pop-up menu and click PPP.
- 6 Enter the information from your ISP and click Apply Now.



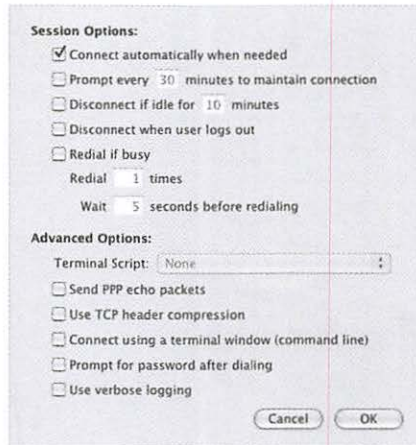
To test your Internet configuration:

- 1 Open the Internet Connect application (in the Applications folder).
- 2 Click the Internal Modem icon, if necessary.
- 3 Enter your dial-up telephone number, account name, and password, if necessary.
- 4 Click Connect.

Internet Connect dials your ISP and establishes a connection.

To connect automatically when you start an Internet application, such as a web browser or email:

- 1 Click PPP Options (in the PPP pane of Network preferences).
- 2 Select the “Connect automatically when needed” checkbox.



- 3 Click OK and Apply Now.

DSL, Cable Modem, or LAN Internet Connections

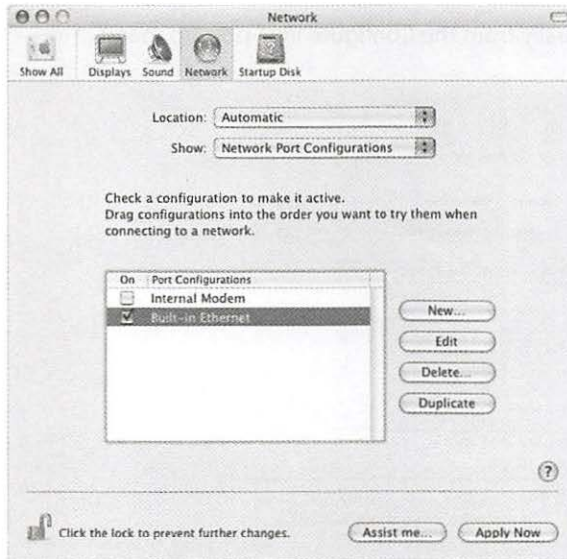
If you connect to the Internet using a DSL or cable modem or Ethernet LAN, ask your ISP or network administrator how you should configure your Internet connection:

- **Manually:** With a manual configuration, your ISP or network administrator provides a static IP address and other information that you enter in Network preferences.
- **Using Dynamic Host Configuration Protocol (DHCP):** With a DHCP configuration, the DHCP server automatically enters the information for you.
- **Using Point-to-Point Protocol over Ethernet (PPPoE):** If you use a DSL modem and need a user name and password to connect to the Internet, you may need to configure your network to use PPPoE.

Make sure you have the information from your ISP available as you configure your network (see page 71).

To set up Network preferences for the built-in Ethernet port:

- 1 Choose Apple (🍏) > System Preferences from the menu bar.
- 2 Click Network.
- 3 Choose Network Port Configurations from the Show pop-up menu.
- 4 Select the On checkbox next to Built-in Ethernet.



- 5 Drag Built-in Ethernet to the top of the Port Configurations list to make it the preferred, or primary, network interface.

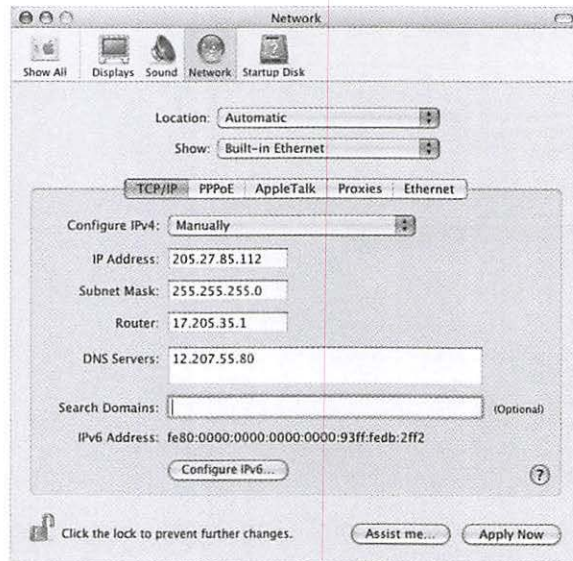
Next, follow the instructions to configure your network manually, using DHCP, or using PPPoE, as instructed by your ISP or network administrator.

Manual Configuration

Have your static IP address, router address, and subnet mask from your ISP ready (see page 71).

To set up a manual configuration:

- 1 In Network preferences, choose Built-in Ethernet from the Show pop-up menu.
- 2 Click TCP/IP, if necessary.
- 3 Choose Manually from the Configure IPv4 pop-up menu.



- 4 Type the other information into the corresponding fields.
- 5 Click Apply Now.

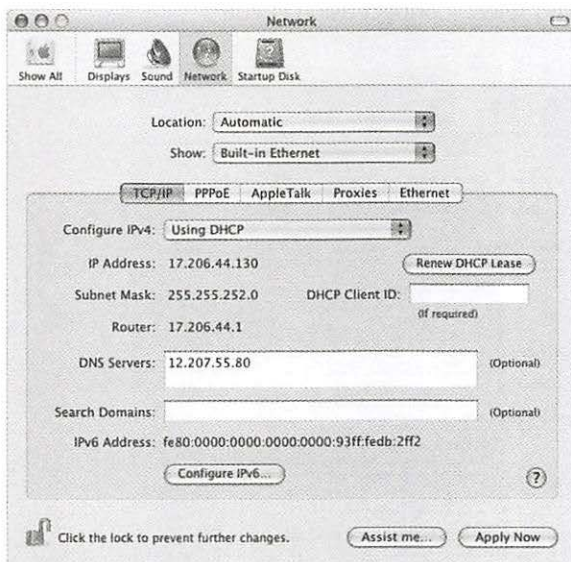
Once you configure your network, your connection is ready. Open your web browser (or another TCP/IP application) to test your Internet connection.

DHCP Configuration

After you set up a DHCP configuration, the DHCP server automatically provides your network information.

To set up a DHCP configuration:

- 1 In Network preferences, choose Built-in Ethernet from the Show pop-up menu.
- 2 Click TCP/IP, if necessary.
- 3 Choose Using DHCP from the Configure IPv4 pop-up menu.



- 4 Click Apply Now.

Open your web browser (or another TCP/IP application) to test your Internet connection.

Note: Unless your ISP instructs you to do otherwise, ignore the DHCP Client ID field and the Search Domains field.

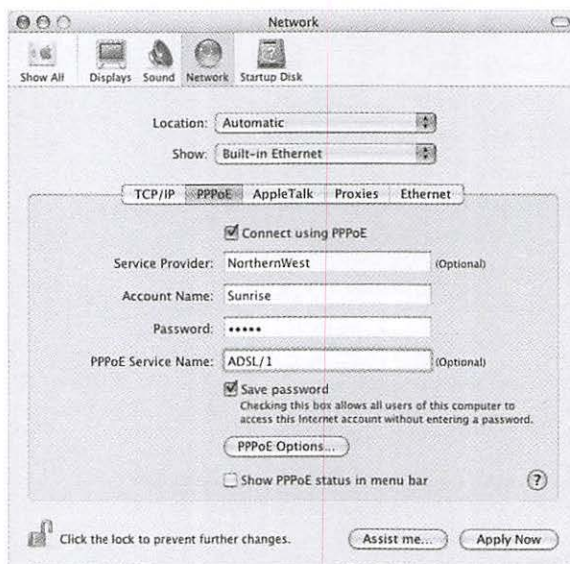
PPPoE Configuration

Some DSL-based ISPs use Point-to-Point Protocol over Ethernet (PPPoE). If you use a DSL modem and need a user name and password to connect to the Internet, check with your ISP to determine if you should connect using PPPoE.

To set up a PPPoE connection:

Have your user name, password, and if required, the domain name server (DNS) address from your ISP available as you configure your network (see page 71).

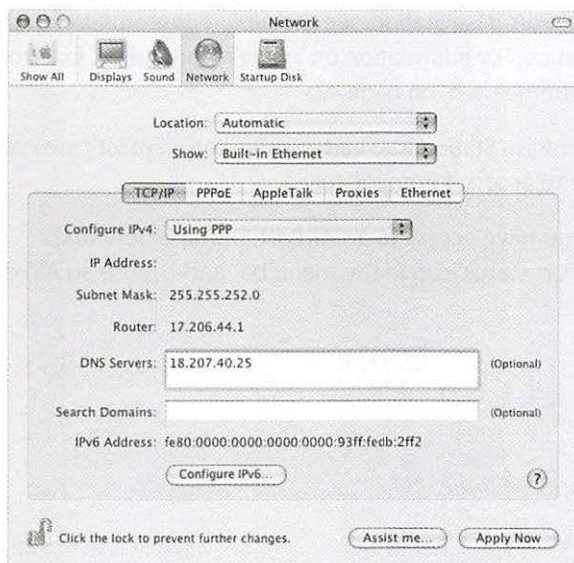
- 1 In Network preferences, choose Built-in Ethernet from the Show pop-up menu.
- 2 Click PPPoE and select "Connect using PPPoE."



- 3 Type the information into the corresponding fields. If you want all users of your computer to use the same connection method, select "Save password."

Note: To connect automatically when you start a TCP/IP application, such as a web browser or email, click PPPoE Options, then select "Connect automatically when needed."

- 4 Click TCP/IP and choose either Using PPP or Manually from the Configure IPv4 pop-up menu, as instructed by your ISP. If you have a static IP address from your ISP, choose Manually and type the address in the IP Address field.
- 5 Type the domain name server (DNS) addresses in the DNS Servers field.



- 6 Click Apply Now.

Once you configure your network, your Internet connection is ready. You can open your web browser or other TCP/IP application to test your connection.

Important: If you did not select the option to connect automatically, you will need to open the Internet Connect application, choose the correct configuration, and then click Connect. For more information, choose Help > Internet Connect Help from the menu bar at the top of the display.

AirPort Extreme Wireless Connection

If your iMac G5 has an AirPort Extreme Card installed, you can configure your AirPort network and Internet connection using AirPort Setup Assistant, located in the Utilities folder within your Applications folder. The assistant helps you configure the AirPort Base Station and set up your computer to use AirPort Extreme. For more information about your AirPort Base Station, see the *AirPort Base Station Setup Guide* that came with your base station. For information on installing an AirPort Extreme Card, see “Installing an AirPort Extreme Card” on page 47.

If your AirPort Base Station is already configured, in most cases your AirPort Extreme Card is ready to access it immediately.

To check if you have access to an AirPort Extreme network:

- Click the AirPort status icon in the menu bar and choose an AirPort network listed there.



If you don't see an AirPort network listed, you can use AirPort Setup Assistant to check or change your settings, or you can change them using the Network pane of System Preferences.

Setting Up an AirPort Extreme Connection Manually

Gather the following information from your system administrator if you'll be setting up a manual connection.

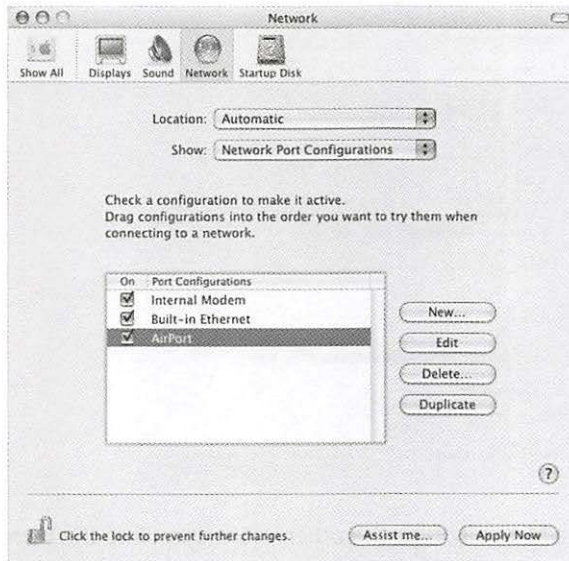
If you'll be connecting using DHCP, most of this information is provided to your computer automatically by the network, so ask your system administrator what is required.

- Domain name server (DNS) addresses, if necessary
- DHCP or manual IP address configuration
- IP address
- Router address
- Subnet mask
- Password, if required

Next, make sure your AirPort connection options are active in Network preferences.

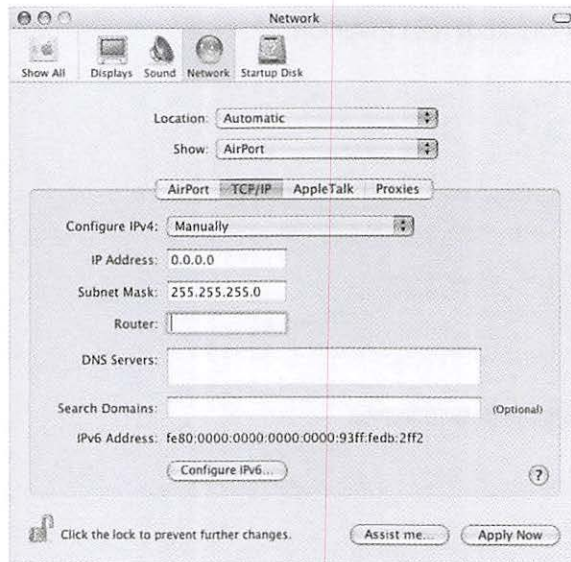
To set up Network preferences for an AirPort Extreme connection:

- 1 Choose Apple () > System Preferences from the menu bar.
- 2 Click Network.
- 3 Choose Network Port Configurations from the Show pop-up menu.
- 4 Select the On checkbox next to AirPort.



Next, follow the instructions to configure your network either manually or using DHCP, as instructed by your ISP or network administrator. If you're setting up your network yourself, it may be easier to configure the network using DHCP, because the server assigns IP addresses automatically.

- 5 Choose AirPort from the Show pop-up menu.
- 6 Click TCP/IP, if necessary.
- 7 In the Configure IPv4 pop-up menu, choose either Manually or Using DHCP.



- If you chose Manually, type the other information into the corresponding fields.
 - If you chose Using DHCP, you don't need to enter any further information unless your system administrator has instructed you to do so.
- 8 Click AirPort and select options for joining an AirPort Extreme network after restarting or when your computer wakes from sleep.
 - 9 Click Apply Now.

Once you configure your AirPort settings, you are ready to connect.

To test your AirPort Extreme connection:

- Click the AirPort status icon in the menu bar and choose Turn AirPort On. Any AirPort Extreme network in range should appear in the menu.

Troubleshooting Your Connection

Cable Modem, DSL, and LAN Internet Connections

If you can't connect to the Internet using your cable modem, DSL, or local area network (LAN), see the following steps.

Important: Instructions that refer to modems do not apply to LAN users. LAN users may have hubs, switches, routers, or connection pods that cable and DSL modem users do not. LAN users should contact their network administrator rather than an ISP.

Check the cables and power supplies

Make sure all modem cables are firmly plugged in, including the modem power cord, the cable from the modem to the computer, and the cable from the modem to the wall jack. Check the cables and power supplies to Ethernet hubs and routers.

Turn the modem on and off and reset the modem hardware

Turn off your DSL or cable modem for a few minutes, then turn it back on. Some ISPs recommend that you unplug the modem's power cord. If your modem has a reset button, you can press it either before or after you turn the power off and on.

PPPoE Connections

If you are unable to connect to your Internet service provider using PPPoE, first check the cables and power supplies, then turn the power off and on and reset the modem hardware.

Check System Preferences settings:

- 1 Choose Apple () > System Preferences.
- 2 Click Network.
- 3 Choose Network Port Configurations from the Show pop-up menu.
- 4 Drag Built-in Ethernet to the top of the Port Configurations list.
- 5 Choose Built-in Ethernet from the Show pop-up menu.
- 6 Click PPPoE.
- 7 Select "Connect using PPPoE."
- 8 Check the Account Name field to be sure you have entered the correct information from your ISP.
- 9 Retype your password if you chose to save your password, to be sure it is correct.
- 10 Click TCP/IP. Make sure you've entered the correct information from your ISP in this pane.
- 11 Click Apply Now.

Network Connections

If you have two or more computers attempting to share an Internet connection, be sure that your network is set up properly. You need to know if your ISP provides only one IP address or if it provides multiple IP addresses, one for each computer.

If only one IP address is used, then you must have a router capable of sharing the connection, also known as network address translation (NAT) or “IP masquerading.” For setup information, check the documentation provided with your router or ask the person who set up your network. The AirPort Extreme Base Station may be used to share one IP address among multiple computers. For information on using the AirPort Extreme Base Station, check the onscreen help or visit the Apple AirPort website at www.apple.com/airport.

If you cannot resolve the issue using these steps, contact your ISP.

Communications Regulation Information

FCC Compliance Statement

This device complies with part 15 of the FCC rules. Operation is subject to the following two conditions: (1) This device may not cause harmful interference, and (2) this device must accept any interference received, including interference that may cause undesired operation. See instructions if interference to radio or television reception is suspected.

Radio and Television Interference

This computer equipment generates, uses, and can radiate radio-frequency energy. If it is not installed and used properly—that is, in strict accordance with Apple's instructions—it may cause interference with radio and television reception.

This equipment has been tested and found to comply with the limits for a Class B digital device in accordance with the specifications in Part 15 of FCC rules. These specifications are designed to provide reasonable protection against such interference in a residential installation. However, there is no guarantee that interference will not occur in a particular installation.

You can determine whether your computer system is causing interference by turning it off. If the interference stops, it was probably caused by the computer or one of the peripheral devices.

If your computer system does cause interference to radio or television reception, try to correct the interference by using one or more of the following measures:

- Turn the television or radio antenna until the interference stops.
- Move the computer to one side or the other of the television or radio.
- Move the computer farther away from the television or radio.
- Plug the computer into an outlet that is on a different circuit from the television or radio. (That is, make certain the computer and the television or radio are on circuits controlled by different circuit breakers or fuses.)

If necessary, consult an Apple-authorized service provider or Apple. See the service and support information that came with your Apple product. Or, consult an experienced radio/television technician for additional suggestions.

Changes or modifications to this product not authorized by Apple Computer, Inc., could void the EMC compliance and negate your authority to operate the product.

This product was tested for EMC compliance under conditions that included the use of Apple peripheral devices and Apple shielded cables and connectors between system components. It is important that you use Apple peripheral devices and shielded cables and connectors between system components to reduce the possibility of causing interference to radios, television sets, and other electronic devices. You can obtain Apple peripheral devices and the proper shielded cables and connectors through an Apple-authorized dealer. For non-Apple peripheral devices, contact the manufacturer or dealer for assistance.

Responsible party (contact for FCC matters only): Apple Computer, Inc. Product Compliance, 1 Infinite Loop M/S 26-A, Cupertino, CA 95014-2084, 408-974-2000.

Bluetooth Information

FCC Bluetooth Wireless Compliance for Model A1044

The antenna used with this transmitter must not be colocated or operated in conjunction with any other antenna or transmitter subject to the conditions of the FCC Grant.

Bluetooth Industry Canada Statement

This Class B device meets all requirements of the Canadian interference-causing equipment regulations.

Cet appareil numérique de la Class B respecte toutes les exigences du Règlement sur le matériel brouilleur du Canada.

Bluetooth Europe–EU Declaration of Conformity

This wireless device complies with the specifications EN 300 328, EN 301-489, and EN 60950 following the provisions of the R&TTE Directive.

Industry Canada Statement

Complies with the Canadian ICES-003 Class B specifications. Cet appareil numérique de la classe B est conforme à la norme NMB-003 du Canada.

VCCI Class B Statement

情報処理装置等電波障害自主規制について

この装置は、情報処理装置等電波障害自主規制協議会 (VCCI) の基準に基づくクラス B 情報技術装置です。この装置は家庭環境で使用されることを目的としていますが、この装置がラジオやテレビジョン受信機に近接して使用されると、受信障害を引き起こすことがあります。

取扱説明書に従って正しい取扱をしてください。

European Community

Complies with European Directives 72/23/EEC, 89/336/EEC, and 99/5/EEC.

Laser Information

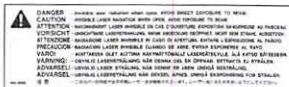
Warning: Making adjustments or performing procedures other than those specified in your equipment's manual may result in hazardous radiation exposure.

Do not attempt to disassemble the cabinet containing the laser. The laser beam used in this product is harmful to the eyes. The use of optical instruments, such as magnifying lenses, with this product increases the potential hazard to your eyes. For your safety, have this equipment serviced only by an Apple-authorized service provider.

If you have an internal Apple CD-ROM, DVD-ROM, or DVD-RAM drive in your computer, your computer is a Class 1 laser product. The Class 1 label, located in a user-accessible area, indicates that the drive meets minimum safety requirements. A service warning label is located in a service-accessible area. The labels on your product may differ slightly from the ones shown here.



Class 1 label



Service warning label

Exposure to Radio Frequency Energy

The radiated output power of the optional AirPort Extreme Card is far below the FCC radio frequency exposure limits. Nevertheless, it is advised to use the wireless equipment in such a manner that the potential for human contact during normal operation is minimized.

Mouse Class 1 LED Information

The Apple optical mouse is a Class 1 LED product in accordance with IEC 60825-1 A1 A2. This product complies with the requirements of European Directives 72/23/EEC and 89/336/EEC.

It also complies with the Canadian ICES-003 Class B Specification.

Taiwan Statement

產品名稱：滑鼠

型號：M 5 7 6 9

進口商：美商蘋果電腦股份有限公司台灣分公司

Korea Statement

명 칭 (모델명) : 마우스 (M5769)

인 증 번 호 : E-C011-00-3670 (B)

인 증 자 상 호 : 애플컴퓨터코리아(주)

제 조 년 월 일 : 별도표기

제 조 자 / 제 조 국 : Apple Computer Inc. / 중국



명 칭 (모델명) : 마우스 (M5769)

인 증 번 호 : E-C011-00-3000 (B)

인 증 자 상 호 : 애플컴퓨터코리아(주)

제 조 년 월 일 : 별도표기

제 조 자 / 제 조 국 : Apple Computer Inc. / 말레이시아



High-Risk Activities Warning

This computer system is not intended for use in the operation of nuclear facilities, aircraft navigation or communications systems, or air traffic control machines, or for any other uses where the failure of the computer system could lead to death, personal injury or severe environmental damage.

ENERGY STAR® Compliance

As an ENERGY STAR® partner, Apple has determined that standard configurations of this product meet the ENERGY STAR guidelines for energy efficiency. The ENERGY STAR program is a partnership with office product equipment manufacturers to promote energy-efficiency. Reducing energy consumption of office products saves money and reduces pollution by eliminating wasted energy.

Disposal and Recycling Information

The backlight lamp in this product contains mercury. Dispose according to local, state, and federal laws.

For information about Apple's recycling program, go to www.apple.com/environment/summary.html

Battery Disposal

Dispose of batteries according to your local environmental laws and guidelines.

Nederlands: Gebruikte batterijen kunnen worden ingeleverd bij de chemokar of in een speciale batterijcontainer voor klein chemisch afval (kca) worden gedeponeerd.



Telephone and Apple 56K Modem Information

Notify Your Telephone Company

Some telephone companies require that you notify the local business office when you hook up a modem to their lines.

Information You Need in the United States

The internal modem complies with Part 68 of the FCC rules. On the back of this equipment is a label that contains, among other information, the FCC registration number and ringer equivalence number (REN). If requested, provide this information to your telephone company.

- *Ringer equivalence number (REN):* 0.1B The REN is useful to determine the quantity of devices you may connect to your telephone lines and still have all those devices ring when your telephone number is called. In most, but not all areas, the sum of the RENs of all devices connected to one line should not exceed five (5.0). To be certain of the number of devices you may connect to your line, as determined by the REN, you should contact your local telephone company to determine the maximum REN for your calling area.
- *Telephone jack type:* USOC, RJ-11 An FCC-compliant telephone cord and modular plug are provided with this equipment. This equipment is designed to be connected to the telephone network or premises wiring using a compatible modular jack that complies with Part 68 rules. See the installation instructions for details.

Telephone Line Problems

If your telephone doesn't work, there may be a problem with your telephone line. Disconnect the modem to see if the problem goes away. If it doesn't, report the problem either to your local telephone company or to your company's telecommunications people.

If disconnecting the modem eliminates the problem, the modem itself may need service. See the service and support information that came with your Apple product for instructions on how to contact Apple or an Apple-authorized service provider for assistance.

If you do not disconnect your modem when it is adversely affecting the telephone line, the telephone company has the right to disconnect your service temporarily until you correct the problem. The telephone company will notify you as soon as possible. Also, you will be informed of your right to file a complaint with the FCC.

The telephone company may make changes in its facilities, equipment, operations, or procedures that could affect the operation of your equipment. If this happens, the telephone company will provide advance notice in order for you to make the necessary modifications to maintain uninterrupted service.

The internal modem will not work with party lines, cannot be connected to a coin-operated telephone, and may not work with a private branch exchange (PBX).

Telephone Consumer Protection Act

The Telephone Consumer Protection Act of 1991 makes it unlawful for any person to use a computer or other electronic device to send any message via a telephone fax machine unless such message clearly contains, in a margin at the top or bottom of each transmitted page or on the first page of the transmission, the date and time it was sent and an identification of the business or other entity, or individual sending the message and the telephone number of the sending machine of such business, entity, or individual.

Information You Need in Canada

The Industry Canada (IC) label identifies certified equipment. This certification means that the equipment meets certain telecommunications network protective, operational, and safety requirements. The Department does not guarantee the equipment will operate to a user's satisfaction.

Before installing this equipment, make sure that you are permitted to connect to the facilities of the local telecommunications company. Be sure you use an acceptable method of connection to install the equipment. In some cases, you may extend the company's internal wiring for single-line individual service by means of a certified telephone extension cord. Be aware, however, that compliance with these conditions may not prevent degradation of service in some situations.

Repairs to certified equipment should be made by an authorized Canadian maintenance facility designated by the supplier. Any equipment malfunctions or repairs or alterations that you make to this equipment may cause the telecommunications company to request that you disconnect the equipment.

In Canada, contact Apple at: 7495 Birchmount Road, Markham, Ontario, L3R 5G2, 800-263-3394

Warning: Users should ensure for their own protection that the electrical ground connections of the power utility, telephone lines, and internal metallic water pipe system, if present, are connected together. This precaution may be particularly important in rural areas.

Users should not attempt to make such connections themselves, but should contact the appropriate electric inspection authority or electrician.

- **Load number:** 0.1 The load number (LN) assigned to each terminal device denotes the percentage of the total load to be connected to the telephone loop that is used by the device, to prevent overloading. The termination of a loop may consist of any combination of devices, subject only to the requirement that the sum of the load numbers of all devices does not exceed 100.
- **Telephone jack type:** CA-11

Informations Destinées aux Utilisateurs Canadiens

L'étiquette d'Industrie Canada identifie un matériel homologué. Cette étiquette certifie que le matériel est conforme à certaines normes de protection, d'exploitation et de sécurité des réseaux de télécommunications. Le Ministère n'assure toutefois pas que le matériel fonctionnera à la satisfaction de l'utilisateur.

Avant d'installer ce matériel, l'utilisateur doit s'assurer qu'il est permis de le raccorder au réseau de l'entreprise locale de télécommunication. Le matériel doit également être installé en suivant une méthode acceptée de raccordement. Dans certains cas, le câblage appartenant à l'entreprise utilisé pour un service individuel à ligne unique peut être prolongé au moyen d'un dispositif homologué de raccordement (cordon prolongateur téléphonique).

L'abonné ne doit pas oublier qu'il est possible que la conformité aux conditions énoncées ci-dessus n'empêche pas la dégradation du service dans certaines situations. De fait, les entreprises de télécommunication ne permettent pas que l'on raccorde un matériel aux prises d'abonnés, sauf dans les cas précis prévus par les tarifs particuliers de ces entreprises.

Les réparations de matériel homologué doivent être effectuées par un centre d'entretien canadien autorisé désigné par la fournisseur. La compagnie de télécommunications peut demander à l'utilisateur de débrancher un appareil suite à des réparations ou à des modifications effectuées par l'utilisateur ou en raison d'un mauvais fonctionnement.

Veuillez contacter Apple pour des informations supplémentaires:

Apple Canada, Inc.
7495 Birchmount Road
Markham, Ontario
Canada L3R 5G2

Service à la clientèle d'Apple Canada: 800-263-3394

Avertissement : Pour sa propre protection, l'utilisateur doit s'assurer que tout les fils de mise à la terre du secteur, des lignes téléphoniques et les canalisations d'eau métalliques, s'il y en a, soient raccordés ensemble. Cette précaution est particulièrement importante dans les régions rurales.

L'utilisateur ne doit pas tenter de faire ces raccordements lui-même; il doit avoir recours à un service d'inspection des installations électriques ou à un électricien, selon le cas.

- **Numéro de charge:** 0.1 L'indice de charge (IC) assigné à chaque dispositif terminal indique, pour éviter toute surcharge, le pourcentage de la charge totale qui sera raccordée à un circuit téléphonique bouclé utilisé par ce dispositif. La terminaison du circuit bouclé peut être constituée de n'importe quelle combinaison de dispositifs pourvu que la somme des indices de charge de l'ensemble des dispositifs ne dépasse pas 100.
- **Type de prise téléphonique:** CA-11

Information You Need in the United Kingdom

This terminal equipment is intended for direct connection to the analogue Public Switched Telecommunications Network and is approved for use within the United Kingdom with the following features:

- Modem facility
- Autocalling facility
- Autoanswer facility
- DTMF signaling

Operation in the absence of proceed indication or upon detection of proceed indication

This product is in conformity with relevant regulatory standards following the provisions of European Council Directives 73/23/EEC (Low Voltage Directive) and 89/336/EEC amended by 92/31/EEC (EMC Directive).

Informationen für Deutschland

Diese Modem-Karte ist als Endeinrichtung vorgesehen und muss an ein TAE mit F-Kodierung angeschlossen werden. Diese Endeinrichtung ist in Konformität gemäß Niederspannungsrichtlinie 73 / 23 / EWG sowie EMC-Richtlinien 89 / 336 / EWG und 92 / 31 / EWG.

Informations pour la France

Ce matériel est conforme aux normes applicables de sécurité électrique d'après la directive 73 / 23 / CEE et aux normes applicables de compatibilité électromagnétique d'après la directive 89 / 336 / CEE, modifié par la directive 92 / 31 / CEE.

Information You Need in Australia

All telecommunications devices are required to be labelled as complying to the Australian telecommunications standards, ensuring the health and safety of the operator and the integrity of the Australian telecommunications network. To provide compliance with the Australian Communications Authority's technical standards, please ensure that the following AT commands are maintained:

- ATB0 (ITU/CCITT operation)
- AT&G0 (no guard tone)
- AT&P1 (33/66 pulse dial make/break ratio)
- ATS0 = 0 or ATS0 = 1 (no answer or answer greater than one ring)
- ATS6 = 95 (DTMF period between 70–255 ms)
- ATS11 = 95 (DTMF period between 70–255 ms)

For calls that are automatically generated, a total of three call attempts are allowed to a telephone number, with a minimum period between calls of 2 seconds. If the call does not connect after three attempts, 30 minutes must expire before automatic redialing may be initiated. Failure to set the modem (and any associated communications software) to

the above settings may result in the modem being non-compliant with Australian telecommunications standards. Under these circumstances a user could be subject to significant penalties under the Telecommunications Act 1997.

This modem must be properly secured in order for you to use it. Telecommunications network voltages exist inside the computer and the telecommunications line connection must be removed before opening the computer.

Information You Need in New Zealand

This modem is fully approved to operate on the New Zealand telecommunications network under Telepermit number PTC 211/04/002. All telecommunications devices are required to hold a Telepermit and be labelled accordingly with the approved Telepermit number to comply with the New Zealand telecommunications standards, ensuring the health and safety of the operator and the integrity of the New Zealand telecommunications network. To ensure compliance, all calls that are automatically generated should not make more than 10 call attempts to the same number within any 30 minute period with a minimum period between calls of 30 seconds. Failure to adhere to these standards may result in the modem being non-compliant with New Zealand Telecom standards. Under these circumstances a user could be subject to significant penalties.

Important: The grant of a Telepermit for any item of terminal equipment indicates that only Telecom has accepted that the item complies with minimum conditions for connection to its network. It indicates no endorsement of the product by Telecom, nor does it provide any sort of warranty. Above all, it provides no assurance that any item will work correctly in all respects with another item of Telepermitted equipment of a different make or model, nor does it imply that any product is compatible with all of Telecom's network services.

A

- AirPort Extreme 15, 28
 - connection 73
 - installing an AirPort Extreme Card 47
 - problems using 60
 - setting up 82
- analog audio 32, 33
- application freeze 21
- applications 22
- audio line in port 15

B

- battery
 - replacing the internal backup battery 51
- built-in microphone 13
- Built-in speakers 13
- burning a CD-R or CD-RW disc 37
- burning a DVD 38

C

- cable modem 76
- cameras
 - digital 24
 - DV 26
- Carrying Your iMac G5 65
- CD
 - burning (recording) 37
- CD-ROM drive 36
- changing
 - System Preferences 17
 - the desktop 17
- cleaning your computer 65
- Combo drive 13, 36
- Computer disposal 89
- connecting
 - a printer 18
 - headphones 19
 - mobile phone 29
 - PDA via Bluetooth 29
 - to a network 31
 - to an external display or VGA projector 34
 - to a TV, video projector, or VCR 34

D

- date and time settings lost 61
- DHCP 73
 - configuration 79
- dial-up
 - connection 74
 - modem 73
- dialup connection 69
- digital video camera 26
- display
 - cleaning 65
- downloading software 19
- DSL 73, 76
- DVD
 - burning (recording) 38
- DVD-ROM/CD-RW Combo drive 13, 36
- DVD-Video, playing 37
- Dynamic Host Configuration Protocol (DHCP) 76

E

- ejecting a disc 61
- eject key 13
- environment 68
- ergonomics 67
- Ethernet 31
 - port 15
- external hard disks 26

F

- FireWire
 - connecting devices 26
 - ports 15
- FireWire Target Disk Mode 27
- floppy disk drives 24
- Force Quit 21
- freezing up 57
- frozen application 21

G

- game pads 24

H

- hard disks 26
- Headphone Out/Optical Audio Out Port 32
- headphones, speakers 15

I

- iDVD 38
- iMac G5 – Back View 14
- iMac G5 – Front View 12
- inserting a CD or DVD 36
- installing
 - applications 59, 60
 - Classic support 59, 60
 - Mac OS 9 59, 60
 - Mac OS X 59, 60
- Internet
 - configuration 75
 - connecting to 8, 82
 - problems connecting 61, 85
 - settings 71
- Internet service provider 69
- iPod 26
- ISP 69

J

- joysticks 24

K

- keyboard 7, 24
 - controls 38
 - ergonomics 68

L

- LAN 76
 - connection 73

M

- Mac Help 22
- Mac OS X 16
- manual Internet configuration 78
- memory 15
 - installing additional memory 41
 - seeing how much memory your computer has 46
- modem
 - cable 31, 69
 - DSL 31, 69
 - port 15
- monitoring
 - a printer 18
- mouse 7, 13
 - ergonomics 68

N

- network connections 86
- Network Setup Assistant 69

O

- optical disc drive 13, 36

P

- Point-to-Point Protocol 73, 76, 80
- power button 15
- power indicator light 13
- power socket 15
- PPPoE 73
 - configuration 80
- Print & Fax preferences 18
- printing 18
 - setup 18
- problems
 - AirPort Extreme 60
 - computer freezes during startup 58
 - computer won't respond 57
 - computer won't start up 58
 - connecting to Internet 85
 - date and time settings lost 61
 - ejecting a disc 61
 - Internet connection 61
 - problem with an application 60

S

- safety 66
- scanners 24, 26
- security slot 15
 - securing your computer 39
- serial number 61
- setting up a printer 18
- setting up your computer 6
- shutting down 9
- sleep 9
- Software Update 19
- specifications 63
- static IP address 78
- stopping
 - an application 21
- SuperDrive 13, 36
- System Preferences 17
- System Profiler 63

T

- testing your Internet configuration 75
- transferring
 - files or documents 20
- troubleshooting 57

U

- updating software 19
- USB 24
 - connecting devices 24
 - hubs 25
 - ports 13, 15
 - using multiple devices at once 25

V

- video out port 15, 34
- volume controls 13

W

- wireless networking and Internet
 - installing an AirPort Extreme Card 47
- wireless networking and Internet access 28
- working with a printer 18

www.apple.com

034-2855-A
Printed in China